

# Greater Brisbane

State Budget

05-06



#### Premier's Message

My Government is continuing our investment in public infrastructure and services to meet the current and future needs of all Queenslanders.

We are also committed to working to ensure we create opportunities for Queensland's future prosperity and to continue building on the Smart State's strong and stable foundations by supporting the leading edge research technologies.

This Regional Budget Statement outlines the Government's ongoing investment in Greater Brisbane's regional infrastructure and details important regional initiatives in 2005-06.

My Government is meeting the needs of the people in Greater Brisbane through infrastructure initiatives and services, especially in the areas of transport, training, education, health and housing.

In 2005-06, our infrastructure initiatives will enable the Greater Brisbane region to use the opportunities the region has to offer. This Statement demonstrates a significant commitment to the long-term viability of the region.

My Government will continue to work with the people of Greater Brisbane to create employment and lifestyle opportunities for all Queenslanders.

#### State Budget highlights for the Greater Brisbane region in 2005-06 include:

- \$50.8 million to establish a full-scale emergency department at the Prince Charles Hospital, an additional 120 beds, operating theatres and renal dialysis facilities
- \$18.7 million to refurbish Block 7 as part of the Herston Hospitals Complex
- \$45.47 million for the Boggo Road Precinct Redevelopment. Actual costs are not yet finalised but initial estimates indicate an overall cost of several hundred million dollars
- Investing in the Inner Northern Busway including \$82 million towards the Queen Street Bus Station to Roma Street extension, \$9.4 million to complete construction of the Royal Children's Hospital and Normanby Bus Stations and \$2 million to start building the Roma Street Bus Station
- \$162.38 million to develop the Port of Brisbane including:
  - commercial operations and infrastructure development at the Hamilton and Eagle Farm estates;
  - ongoing relocation of Hamilton facilities to Fisherman Islands;
  - constructing car terminals at Whimbrel Street;
  - developing land within Whyte Island precinct; and
  - developing the Colmslie and Hamilton Precincts.
- \$78.32 million for the Gateway Motorway and Bridge.



→ Greater  
Brisbane, the cities of Ipswich, Logan and Redcliffe, and  
the shires of Pine Rivers and Redland.



Queensland Government

Smart State

Peter Beattie MP  
Premier and Minister for Trade

## South East Queensland Infrastructure Plan 2005-2026

South East Queensland has been growing strongly for the past 20 years and over this period the region's population has grown by almost one million people making it the fastest growing region in Australia.

To keep pace with this growth the Queensland Government has unveiled Australia's largest and most ambitious infrastructure plan since Federation, outlining investments of up to \$55 billion in South East Queensland over the next 20 years.

# Greater Brisbane Infrastructure

### Projects include:

More than \$1.2 billion for new busways in Brisbane including from the Green Bridge at Dutton Park to Capalaba and Enoggera Creek to Bracken Ridge

\$250 million for the redevelopment of the Ipswich Hospital

\$290 million to add another rail line in the Western Corridor from Corinda to Redbank

\$300 million to plan and build a passenger rail line from Darra to Springfield, including new stations

\$250 million for two additional bus priority and transit lanes on the Centenary Highway between the Ipswich Motorway and Toowong Cemetery

Upgrading the Ipswich Motorway, once Commonwealth funding becomes available after the Goodna Bypass investigation is completed. The upgrade would involve widening the motorway to six lanes between Granard Road to Logan Motorway, Logan Motorway to Goodna and Goodna to Riverview



\$530 million will be spent from 2006-07 building the Northern Busway, connecting the Inner Northern Busway at Royal Brisbane Hospital to Chermiside, Aspley and Bracken Ridge

Stage two of the Port of Brisbane Motorway from Lytton Road to the port will be designed and built at a cost of \$150 million

Widen to four lanes the Cleveland-Redland Bay Road (between South Street and Boundary Road) and the Redland Bay Road (between Tingalpa Creek and Taylor Road) at a cost of \$110 million.



This Regional Budget Statement for Greater Brisbane highlights the Government's 2005-06 spending commitment to this region and its people. As a Government, we recognise the regions' valuable contributions to making Queensland the Smart State and providing services to over 3.9 million people. In this Budget we have allocated nearly 60% of capital expenditure outside the Brisbane Statistical Division.

The Greater Brisbane region covers less than 0.3% of the State. The region is home to 1.59 million Queenslanders and 21% of the State's Indigenous population. The region's unemployment rate is 4.4%. This region is the State's centre for administration, with a well-developed knowledge economy supported by several universities, and research and training facilities. The region is home to the national headquarters of a number of businesses and is the transport and distribution hub of the State.

## Improving health care and strengthening services to the community

We are committed to providing better hospitals, services and health care for all Queenslanders. Within Greater Brisbane, this commitment includes spending on initiatives such as:

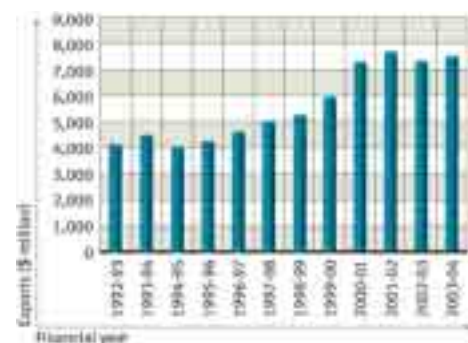
- an integrated primary health care facility providing collaborative general practice and community health services, including \$8.9 million for Browns Plains and the Jimboomba area, and \$8.7 million in North Brisbane and Caboolture
- \$6.83 million towards the total project cost of \$111 million to redevelop the public component of the Mater Hospital.

Expenditure on new and upgraded emergency services facilities and staff in the region includes:

- \$3.5 million as part of a \$20 million project to enhance the Queensland Combined Emergency Services Academy at Whyte Island
- \$15.04 million to redevelop the Roma Street Fire and Ambulance Station

### Exports from Port of Brisbane

(\$ million), 1992-93 to 2003-04



Source: ABS Foreign Trade (unpublished data)

- \$4.12 million for new and redeveloped fire stations, including at Mount Gravatt and Durack (to replace the Oxley Fire Station)
- \$3.47 million to build and refurbish ambulance stations including at Ipswich, Samford Valley and Birkdale.

We have committed \$134.19 million to support people with disabilities and their carers in the region including:

- approximately \$4.21 million for short term and limited respite care
- \$1.73 million to assist young adults with a disability who are leaving the State's care to maintain their choice of living arrangements and to participate in their community.

Additional support of \$8.03 million for community organisations will enable them to increase their capacity to continue to support people with a disability and their families.

Community groups will receive \$41.27 million to provide services in the region, including \$2.13 million for child care, \$6.87 million for community support, \$2.88 million for domestic violence prevention, \$5.66 million for prevention and early intervention services to support vulnerable children, young people and their families, \$18.51 million to support people at risk of homelessness, \$337,000 to link older people with their community, and \$4.89 million for youth development and justice.

We are working to support low-income families and individuals through housing and housing related services. Spending in this region in 2005-06 includes:

- \$142.36 million for new and upgraded public housing
- \$16.85 million for the Brisbane Housing company to provide affordable rental accommodation
- \$8.6 million for community housing programs and services to address crisis transitional and long-term housing needs
- \$3.4 million in capital funding to complete stage one of the Lady Bowen Complex, as part of a five year \$30 million joint project which will provide accommodation and support services for homeless people in the inner-city
- \$3.95 million to construct or purchase dwellings, and purchase land for future construction of Aboriginal and Torres Strait Islander rental housing.

### Gabba redevelopment to increase seating capacity



Image supplied courtesy of Bluescope Steel

In 2005-06 the Government has funded organisations across the State to build or upgrade sport and recreation facilities. \$9.45 million for projects in Greater Brisbane includes:

- \$1.24 million to redevelop an existing AFL field, soccer field and construct a new soccer amenities building, a nine hole par three golf course and mini golf course at O'Callaghan Park, Zillmere
- \$760,000 to the Redland Shire Council to construct a pool and gymnasium at the Cleveland Aquatic Centre.

## Realising the Smart State through education, skills and innovation

The Premier launched the latest Smart State Strategy on 18 April 2005. *Smart Queensland: Smart State Strategy*

2005-2015 establishes the strategic framework for using innovation and skills to drive economic growth to improve prosperity and quality of life for all Queenslanders.

Projects that received funding as part of the Smart State Research Facilities Fund include:

- \$14.5 million to develop an additional 28 sites for manufacturing and port related industries in the Lytton Industrial Estate
- \$6.6 million to expand research at the Mount Gravatt Technology Park to include bio-prospecting of natural products, and drug design in cellular and molecular therapies
- \$7.5 million towards an Institute of Health and Biomedical Innovation to be built by the Queensland University of Technology as part of the Kelvin Grove Urban Village
- \$7.5 million towards the establishment of an Australian Institute of Bioengineering and Nanotechnology at the St Lucia Campus of the University of Queensland, with a total project cost of \$50 million.

We are investing in school infrastructure across Greater Brisbane for the benefit of young people and their education. In 2005-06, funding includes:

- \$16 million, including \$1.6 million for fit out, to develop the Queensland Smart Academy for Creative Arts, and \$8.5 million, including \$850,000 for fit out, to develop the Queensland Smart Academy for Science, Mathematics and Technology
- \$12.33 million, including \$1.6 million for fit out, to construct a new State School at Drewvale
- \$5 million, including \$500,000 for fit out, to redevelop Brisbane State High School
- \$3 million, including \$240,000 for fit out, to extend North Lakes State College at Murrumba to accommodate years 11 and 12 students.

## Protecting our children and enhancing community safety

The Government is continuing to build a radically improved child protection system. A record \$394.8 million operating budget, up 45% since last year, will be spent this year to safeguard the welfare of Queensland's children. The Greater Brisbane region will benefit from the unprecedented increase of \$123 million for State-wide initiatives such as:

- \$28.8 million for additional permanent frontline and support staff
- \$19.6 million for extra alternative care places, extended family reunification services, foster care by non-government agencies and for sexual abuse counselling services
- \$13 million on foster care allowances and a further \$9 million for child related costs.

### Fireworks at Riverfestival

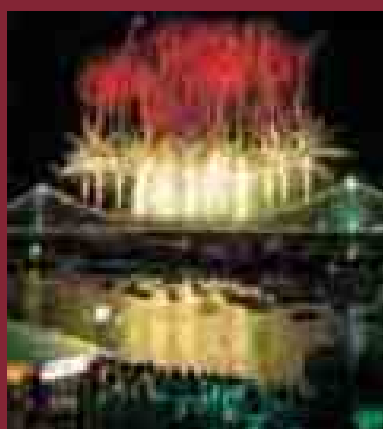


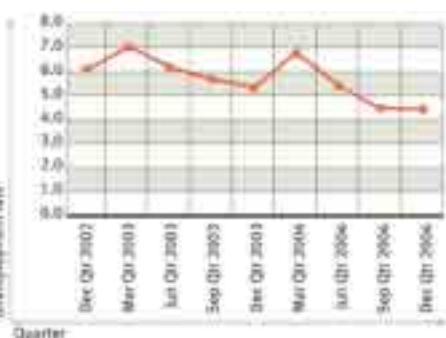
Image courtesy Queensland Tourism

Riverfire is Queensland's biggest fireworks spectacle, lighting up Brisbane's skies during the Riverfestival event in September 2005. Riverfestival celebrates Brisbane's sub-tropical lifestyle and ignites the city with excitement during its 10-day program.



## Unemployment rate <sup>a</sup>

Quarterly



Source: DEWRSB - Small Area Labour Markets. (QRSIS database maintained by the Office of Economic and Statistical Research (OESR)).

(a) Data based on un-smoothed series.

Augmenting this is a capital program of \$58.8 million which includes:

- \$25 million in additional funding over two years (\$19.2 million in 2005-06) to expand the number of Child Safety offices across the State
- \$25.3 million for the roll-out of a new IT system to better manage client files and departmental business.

Investment in services and infrastructure to enhance community safety within Greater Brisbane include \$4.26 million to complete Stage 2 of the Redland Bay Police Station and replace Redland Bay Water Police's current vessel, \$4.58 million to complete the replacement of the Stafford Police Station and \$500,000 towards planning for a replacement for the Fortitude Valley Police Station.

## Managing urban growth and building Queensland's regions

The South East Queensland Infrastructure Plan and Program outlines the Queensland Government's infrastructure priorities to support the South East Queensland Regional Plan. Infrastructure funding in 2005-06 represents the first stage of implementing the Plan.

Efficient and integrated transport networks are important for the ongoing development of Queensland. In Greater Brisbane, major transport infrastructure initiatives include:

- \$116.5 million in total for modifications to stations and trains and additional rail track infrastructure for the Citytrain network

- \$27 million to begin construction of a two-lane Eastern Busway corridor connection from Buranda to Boggo Road to Green Bridge
- investing in the Inner Northern Busway including \$82 million towards the Queen Street Bus Station to Roma Street extension, \$9.4 million to complete construction of the Royal Children's Hospital and Normanby Bus Stations and \$2 million to begin construction of the Roma Street Bus Station.
- \$162.38 million to develop the Port of Brisbane including:
  - commercial operations and infrastructure development at the Hamilton and Eagle Farm estates;
  - ongoing relocation of Hamilton facilities to Fisherman Islands;
  - constructing car terminals at Whimbrel Street;
  - developing land within Whyte Island precinct; and
  - developing the Colmslie and Hamilton Precincts.
- \$30 million towards construction of the South West Arterial Road from Springfield to Yamanto.

Investment in the electricity system in 2005-06 includes:

- \$81.4 million on seven major transmission network projects by Powerlink
- \$365 million to improve the reliability and quality of the region's distribution network by ENERGEX.

Development within the region is being enhanced by infrastructure projects including:

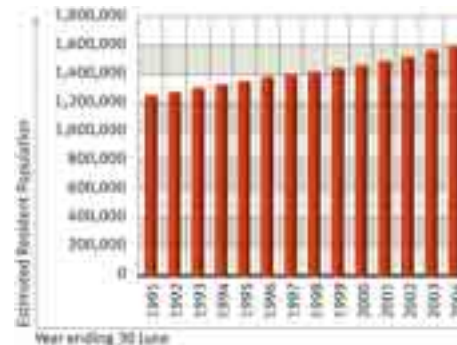
- \$9.97 million to local governments in the region for road and drainage works
- \$19.17 million to upgrade wastewater treatment plants at Oxley Creek and Sandgate
- \$168.7 million to progress the redevelopment of the State Library, construction of the Gallery of Modern Art, and associated projects.

## Protecting the environment for a sustainable future

The natural and cultural heritage of Greater Brisbane is valued by all Queenslanders. This is reflected in our commitment of

## Estimated Residential Population

1991 to 2004<sup>(a)(b)</sup>



(a) Data for year ending 30 June

(b) All years are standardised to ASGC 2001

Source: ABS, Regional Population Growth, Australia and New Zealand, Cat no. 3218.0

\$900,000 for enhancing National Parks and conservation areas including:

- upgraded day use facilities at Blue Lake National Park
- upgraded visitor facilities at North Point and The Wrecks campgrounds in Moreton Island National Park
- new air-conditioning at Brisbane Forest Park's visitor complex.

## Growing a diverse economy and creating jobs

The unemployment rate in Greater Brisbane was 4.4% during the December quarter 2004, and has fallen by 4.2 percentage points since the December quarter 1996. The Government continues to work in partnership with the people of Greater Brisbane to build on the region's economic potential.

The Government's Breaking the Unemployment Cycle initiative provides training and job opportunities to Queenslanders. The Greater Brisbane region will receive around \$24.42 million to create an estimated 3,607 jobs through the initiative during 2005-06. \$11.3 million is allocated in 2005-06 to community employment programs and \$13.13 million for apprenticeship and trainee incentives to provide jobs in crucial, skills-shortage industries and the public sector.

## Delivering responsive government

The Queensland Government continues to engage with local communities, businesses and other government agencies to better coordinate services and identify strategies to meet local needs, including through regular Ministerial Regional Community Forums and Community Cabinets.

\$44.56 million will be spent State-wide in 2005-06 (\$125.5 million over the project life) to provide technology to improve business processes across government agencies. This project will generate long term savings and improve service delivery throughout the State.

## New Farm Park

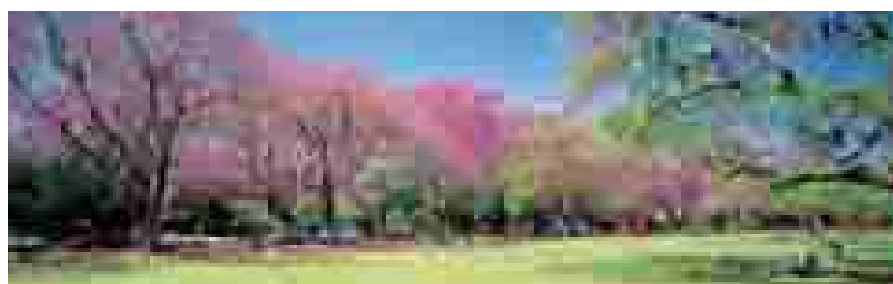


Image courtesy Queensland Tourism

## Budget summary

### Achieving strong economic growth and historic low unemployment rates

- Queensland's year-average unemployment rate is expected to fall to a 30-year low of 5% in 2004-05 and to remain at this historically low level in 2005-06.
- Queensland's employment continues to grow and, at 5¾% and 2½%, is expected to exceed the rest of Australia in 2004-05 and 2005-06, respectively.
- The State is expected to continue to grow more rapidly than the rest of Australia in 2005-06, representing the 10th consecutive year of performance above that of the other states.

### Strong finances

- A General Government net operating surplus of \$934 million is forecast in 2005-06.
- The expected 2004-05 operating result of \$2.725 billion reflects the strength of the economy and investment markets.
- Beyond 2005-06, smaller operating and cash surpluses are forecast, primarily reflecting costs associated with significant investment in new infrastructure, the abolition of a number of State taxes, and the assumption of investment returns in line with long run averages.
- The State's net worth is budgeted to grow from \$85 billion at 30 June 2005 to in excess of \$93 billion by 30 June 2009.

### Competitive taxes

- Queensland's competitive tax status has been maintained, with taxpayers in other states and territories paying on average 25% more state tax than Queenslanders in 2005-06.
- A land tax relief package will significantly reduce the number of Queenslanders paying land tax and provide rate reductions for all land tax payers, at a cost of \$847 million over four years.
- Debits tax and six stamp duties will be progressively abolished, beginning 1 July 2005. Queenslanders will save \$3.5 billion over seven years from the abolition of these State taxes.

## Delivering on our priorities

### Improving health care and strengthening services to the community

- The health budget increases by \$413 million or 8.4%, including service enhancements across the State.
- \$115.1 million in capital funding and \$120.4 million in recurrent funding has been allocated over four years to further develop responses to homelessness.
- An additional \$180 million over four years is provided to enhance disability services, including respite, emergency and crisis care.

### Realising the Smart State through education, skills and innovation

- \$80.1 million will improve the Information and Communication Technologies (ICT) environment in schools and improve ICT access and the skills of students and teachers.
- \$291.9 million in recurrent and \$62.7 million in capital funding in 2005-06 will support training initiatives under the \$1 billion SmartVET strategy, including additional traineeship places in new and emerging industries, and further funding for the Mining Centre of Excellence to reduce skills shortages affecting the Queensland mining industry.

### Protecting our children and enhancing community safety

- An overall funding increase of \$123.1 million will enhance child protection services.
- Police staffing and resources will be enhanced and \$231 million is allocated over three years to upgrade and extend various correctional facilities.

### Managing urban growth and building Queensland's regions

- Capital spending will be boosted to \$8 billion, \$1.9 billion more than last year's record program.
- The South East Queensland Infrastructure Plan and Program identifies capital projects amounting to around \$55 billion. Over the next four years, approximately \$2 billion is allocated over current Budget commitments.

### Protecting the environment for a sustainable future

- \$58 million in recurrent funding and \$25 million in capital funding has been allocated over four years to manage an estimated additional 3.46 million hectares of Queensland Parks and Wildlife Service estate.
- \$10 million over four years will support Queensland organisations to adopt resource efficient practices to improve the way they do business.

### Growing a diverse economy and creating jobs

- More than \$470 million is provided over four years to support the Government's 10-year Smart State Strategy. This includes \$136 million in recurrent and \$64 million in capital funding over four years for three new Smart State grants programs to build research centres and support innovation in fields including health and medicine, agriculture and mining.
- The Breaking the Unemployment Cycle initiative will continue to provide employment programs for Queenslanders aimed at reducing skills shortages and improving the employability of job seekers.

# Government services in your region

For information on government services and activities in Greater Brisbane, please contact the offices listed below. Additional contacts are available on the Government gateway at [www.qld.gov.au](http://www.qld.gov.au) or by ringing Smart Service Queensland on 13 13 04.

## North Stradbroke Island

### QGAP Office

Shop 2, Stradbroke Place  
Junner Street  
Dunwich QLD 4183  
Telephone 3409 9906  
Facsimile 3409 9431  
Opening hours:  
Monday and Friday - 12pm to 4:30pm,  
Thursday - 8:30am to 4:30pm

## Brisbane

### Department of Communities - Greater Brisbane Regional Office

Level 2, Mineral House  
41 George Street  
Brisbane QLD 4000  
Telephone 3405 6373  
Facsimile 3224 2317  
Opening hours:  
Monday to Friday - 8:30am to 5pm

## Brisbane

### Department of Local Government and Planning - Women's InfoLink

Level 2, 52 Queen Street  
Brisbane QLD 4002  
Toll Free 1800 177 577  
Facsimile 1800 000 658  
Opening hours:  
Monday to Friday - 9am to 5pm

## Brisbane

### Department of Natural Resources and Mines - LandCentre Service Centre

Level 2, Cnr Main and Vulture Streets  
Woolloongabba QLD 4102  
Telephone 3896 3216  
Facsimile 3896 3333  
Opening hours:  
Monday to Friday - 9am to 5pm

## Brisbane

### Office of Economic and Statistical Research

Level 8, 33 Charlotte Street  
Brisbane QLD 4001  
Telephone 3224 5326  
Facsimile 3227 7437  
Opening hours:  
Monday to Friday - 9am to 5pm

## Brisbane

### Office of Urban Management and Infrastructure Coordination

Level 4, 61 Mary Street  
Brisbane QLD 4001  
Telephone 3247 5446  
Facsimile 3235 4563  
Opening hours:  
Monday to Friday - 9am to 5pm

## Brisbane Northside

### State Development and Innovation Centre

Level 2, The Homemaker Centre  
Cnr Gympie and Zillmere Roads  
Aspley QLD 4034  
Telephone 3406 6999  
Facsimile 3406 6996  
Opening hours:  
Monday to Friday - 8:30am to 5pm

## Brisbane Southside

### State Development and Innovation Centre

6 Paxton Street  
Springwood QLD 4127  
Telephone 3884 7860  
Facsimile 3808 9759  
Opening hours:  
Monday to Friday - 8:30am to 5pm

## Ipswich

### Department of Communities - Moreton Regional Office

5-7 Wharf Street  
Ipswich QLD 4305  
Telephone 3280 1777  
Facsimile 3280 1962  
Opening hours:  
Monday to Friday - 8:30am to 5pm

