

Queensland State Budget 2008–09

Fitzroy

Regional Budget Statement



Image courtesy of Tourism Queensland

Kroombit Tourist Park, Biloela

Queensland is experiencing the most sustained period of economic and population growth in its history.

In shaping the 2008-09 Budget, the Government has chosen to build tomorrow's Queensland today.

The State's prosperity is generating unprecedented demand for housing, healthcare, schools, transport, other essential services and vital infrastructure throughout Queensland's regions.

The Budget delivers massive injections of funding to our public hospitals and healthcare system. It funds the biggest capital works program in the State's history.



Anna Bligh MP
Premier

It increases services to the regions and delivers vital long-term social and economic infrastructure for the benefit of all Queenslanders.



heartlands, the booming hubs of mining activity and the vibrant growth of coastal areas.

This document sets out the Government's investment commitment to address the changing needs of the Fitzroy region.

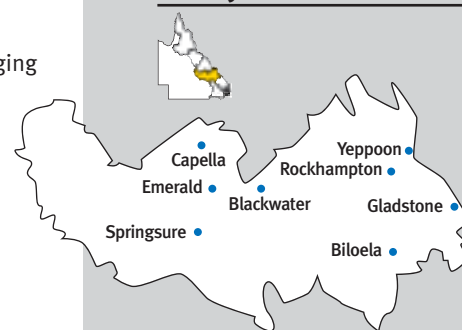
Andrew Fraser MP
Treasurer

State-wide Highlights

Key priorities of the 2008-09 Budget are congestion management, housing affordability, delivering on the Health Action Plan and strengthened community services.

- Tax savings of up to \$9,500 for first homebuyers
- Full abolition of mortgage duty from 1 July 2008
- Record 17% increase in health spending
- Increased rebates and tax breaks for older Queenslanders
- 200 new police officers
- 250 new ambulance officers and 145 new vehicles
- 270 new teachers
- \$100 million boost for school maintenance over two years through the Tomorrow's Schools initiative
- \$20 million for ClimateSmart Home Services
- \$20 million increase to develop community sport and recreation facilities
- \$5.9 million boost to support front-line child protection workers

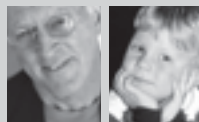
Fitzroy



Every five years the Census provides a snapshot of Australian society. It measures many characteristics including our age and



birthplace, language spoken and religion, if we need



assistance to perform everyday activities or to participate in community life and the work we do (paid or unpaid) and how we get there.

What did the 2006 Census reveal about *your* community? Take a look below for a snapshot of life in the Fitzroy region.

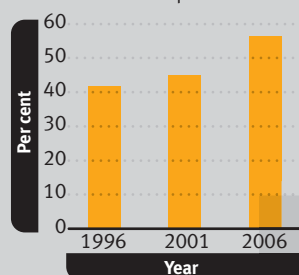
The work we do

Planning officers, engineers, nurses, teachers, sales representatives, fitters and turners, foremen – Fitzroy residents work in a diverse range of jobs. Census data shows 10.8% of people living in the region are employed in the manufacturing industry, while the retail trade industry accounts for 10.6% of employment. Construction (9.3%), healthcare and social assistance (8.6%) and education and training (8.4%) are the other major employment industries in this rapidly growing region.

Our qualifications

Fitzroy's strong population growth has brought with it an increase in the number of skilled workers. Just over 56%¹ of people living in our region now hold 'beyond'² school qualifications – 14.6 percentage point increase compared to 1996 Census results (see graph). Of these qualifications, just under 20% are degree or higher, almost 10% are advanced diploma or diploma and 42.2% are certificate level. Around 30% of Fitzroy residents who identified with having a 'beyond' school qualification did not indicate the level of education received.

Beyond school qualifications
% of persons 15 years and over with a non-school qualification



How much we earn

We've certainly noticed an increase in the cost of living over the years, and as it rises so too does our income. At the time of the 1996 Census, the median weekly household income for the Fitzroy region was \$572. In 2006 the median weekly income for households in our region was \$897 – that's almost 57% more than we earned 10 years earlier³.

¹ Aged 15 years and over with a usual residence in the Fitzroy region at the time of the 2006 Census.

² 'Beyond' school qualification referred to as non-school qualifications in Census data.

³ Based on 2006 Census data.

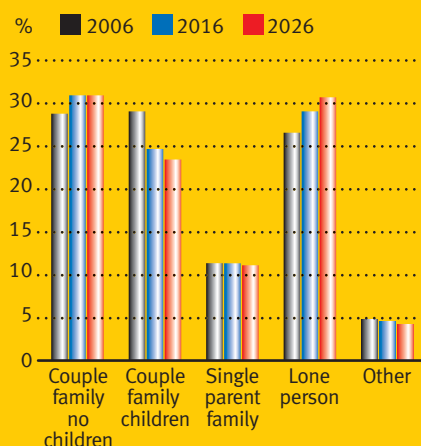
Household projections

Families come in all shapes and sizes and between now and 2026 we can expect to see a lot more of them. But what type of family will occupy most Queensland homes? For the last decade most Queensland households have consisted of couples with children. However household projections forecast that, over the next decade and beyond, the make-up of homes throughout our State will dramatically change.

Throughout our State an ageing population, declining fertility rates among younger couples, and baby boomers becoming 'empty nesters' will result in the number of couples without children and lone person households taking over as the most common types.

Take a look to the right to see how households in the Fitzroy region are likely to change between now and 2026.

Fitzroy
Household composition



Source: Data are based on medium series projections and are sourced from Department of Infrastructure and Planning, Population, Information and Forecasting Unit, Household projections Queensland Local Government Areas 2007.

Covering an area of 122,969 square kilometres or around 7% of the State, Fitzroy is home to almost 5% of Queensland's total population. Over 204,500¹ Queenslanders now call the Fitzroy region home – that's 2% more than the year before².

Gateway to the southern Great Barrier Reef and boasting rainforests, beaches, a world-class university and the economic and industry hubs of Gladstone and Rockhampton, more and more Queenslanders are enjoying the relaxed outdoor lifestyle and sub-tropical climate this region has to offer. Combine this with significant agricultural, mining and resource industries and the related production, manufacturing, transport and storage industries that drive Fitzroy's strong and diverse economy and you can see why more people are choosing the booming Fitzroy region in which to work, live and play.

The Queensland Government recognises the role the Fitzroy region has played in increasing our State's prosperity and sustaining its economic and social growth.

This Regional Budget Statement highlights the Government's commitment to the region and its people.

¹ Population data as at 30 June 2007, Australian Bureau of Statistics, *Regional Population Growth* (cat no 3218.0).

² Population data as at 30 June 2006, Australian Bureau of Statistics, *Regional Population Growth* (cat no 3218.0).

The national Census telling it like it is

Big River Jazz Festival

This annual three-day festival is for lovers of food, music or both. Below: on the banks of the mighty Fitzroy River, day two of the festival showcases music from a variety of jazz genres and fine food and wine.



Photograph supplied courtesy of Casey's Imaging

Healthy individuals and communities

We are committed to improving and sustaining the health and wellbeing of all Queenslanders by investing in infrastructure and services that will strengthen our public health system, promote healthier lifestyles and enhance confidence and safety in our communities.

As part of the Government's continued commitment to meet the growing needs of the community, in 2008-09 spending on health infrastructure and initiatives in the Fitzroy region will include:

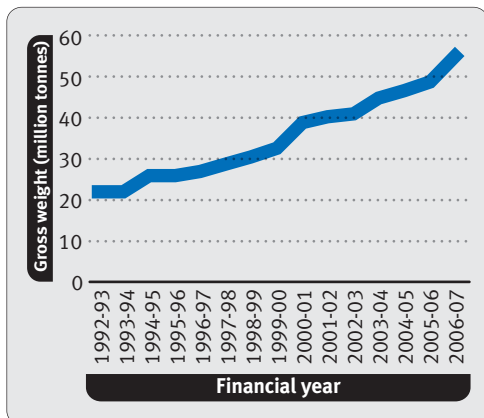
- \$31.7 million towards the \$74 million expansion of the Rockhampton Hospital's emergency department
- \$15.9 million towards the construction of the \$20.6 million replacement hospital at Yeppoon
- \$3.7 million to community-based health and mental health services, including the relocation of oral health services at Gladstone
- \$500,000 of a total of \$7 million to purchase and install a magnetic resonance imaging (MRI) device at Rockhampton Hospital
- \$70,000 to upgrade airconditioning at North Rockhampton Nursing Home
- Replacement and refurbishment of health facilities at Baralaba and Mount Morgan as part of the \$35.5 million over three years Rural Enhancement Program.

Initiatives in the Fitzroy region to enhance community safety through investments in police and emergency services infrastructure projects include:

- \$4.7 million of \$8.6 million to replace the 24-hour police station at Yeppoon

Exports from the Port of Gladstone

Overseas goods exports, gross weight 1992-93 to 2006-07



Source: ABS Foreign Trade (unpublished data)

- \$3.2 million to replace the ambulance station at Mount Morgan and refurbish stations at Moura and Daringa
- \$1.4 million to replace the Yeppoon Water Police patrol boat
- \$700,000 to upgrade the heritage-listed Mount Morgan Police Station.

The Government will continue its support for those in our community who are most vulnerable, with commitments for the Fitzroy region in 2008-09 including:

- \$11.2 million for the Home and Community Care initiative
- \$4.4 million to support people with a disability through a range of programs
- \$2.1 million over four years to establish new residential care facilities to accommodate young people with complex and extreme behaviours
- \$1.3 million over four years to establish additional out-of-home care placements for children
- \$1.3 million towards short-term and time-limited respite support for families of people with a disability
- \$600,000 to refurbish the former Gladstone South Preschool for the delivery of disability services by non-Government service providers.

Building infrastructure

Planning and delivering the infrastructure needed to provide essential and efficient services to our rapidly growing communities – now and in the future – is one of our key priorities. Significant economic activity arising from strong global demand for Queensland's resources has resulted in high demand for energy. The Government's infrastructure investments in the Fitzroy region to underpin the region's economic development in 2008-09 include:

- \$110 million to improve the Callide power station
- \$57.5 million for the Stanwell Power Station
- \$53.4 million for a new substation at Larcom Creek and to expand the substation at the Rio Tinto Alumina Refinery near Gladstone
- \$32 million to upgrade and construct power lines for the Fitzroy electricity network
- \$20.9 million for key initiatives at the Port of Gladstone including \$4.3 million for dust suppression measures at the RG Tanna Terminal and modifications to the ship loading facilities at the Auckland Point terminals.

Other infrastructure initiatives in the Fitzroy region include:

- \$45.2 million as part of an overall budget of \$71.5 million to duplicate the track between Stanwell and Wycarbah
- \$14.3 million on rail infrastructure including a third spur line between Callemondah and RG Tanna Coal Terminal
- \$6.2 million of \$32 million to duplicate the rail track between Westwood and Wycarbah
- \$10 million for preliminary works related to the \$373 million project for a new water supply pipeline from the Fitzroy River to the Gladstone region.

Regional development

Regional development is at the heart of Queensland's economic future and the Government is laying the foundation for



Helping Queenslanders under financial pressure

With household budgets under increasing stress from rising interest rates, higher rents and mounting grocery and fuel prices, the Government is committed to taking the pressure off Queensland families.

Each year the Government offers relief to many Queenslanders through discounts, rebates and subsidies to help improve their access to, and meet the cost of, a range of services including discounted rail and taxi fares, reduced car registration costs, exemption from the community ambulance levy and cheaper electricity bills. In 2008-09 these concessions are estimated to have a total value of around \$1 billion.

However the Queensland Government recognises more and more families are 'doing it tough' and is acting on its commitment to help Queenslanders make ends meet.

On top of the existing concessions, the 2008-09 State Budget sees the implementation of a major housing affordability strategy that will provide relief for Queenslanders who are buying or renting their homes.

The Government will also spend \$570 million in 2008-09 in further relief as it tackles the rising cost of fuel by ensuring all Queenslanders receive the full 8.354 cents per litre fuel subsidy.

future economic growth and prosperity for all Queenslanders by responding to the growth needs of the region.

In 2008-09 we will deliver the following key infrastructure and regional development initiatives in Fitzroy:

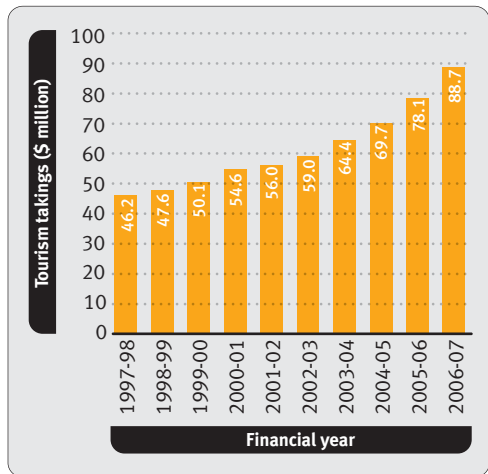
- \$5.9 million for the Capricorn/Fitzroy River Water Pipeline
- \$1.8 million for a 42-kilometre pipeline from the Neville Hewitt Weir at Baralaba to Woorabinda and for a new water treatment plant at Woorabinda
- \$1.5 million for a pool complex at Woorabinda and \$242,000 for the Capella Parkland, Linear Parkland and Interpretive Trails
- \$900,000 to complete the upgrade of the boat ramp at Coorooman Creek, construct a new boat ramp at Tannum Sands and construct a new pontoon at Rosslyn Bay.

Economic growth

Queensland's economic growth is supported by rising productivity and increasing labour force participation. The Government remains committed to expanding the productive capacity of the Queensland economy through initiatives that develop infrastructure, promote education and training and facilitate

Tourism

Takings, 1997-98 to 2006-07



Source: ABS, *Tourist Accommodation, Queensland* (8635.3.40.001 and 8635.3)

research and innovation. Key infrastructure commitments for Fitzroy in 2008-09 include:

- \$10 million to realign the Dawson Highway at the Calliope Range, as part of a \$150 million investment in the Bowen Basin region to support Central Queensland's coal industry
- \$7 million for bridges and approaches at Bushley Overpass
- \$6.3 million to reconstruct the pavement on the Dawson Highway between Meteor Creek north and Three Chain Road, south-east of Springsure
- \$5 million to complete maintenance of the Hospital Road section of the Gregory Highway, north of Emerald
- \$3.1 million to repair and overlay the Burnett Highway between the Argoon turnoff and Jambin, north of Biloela
- \$2.5 million to integrate Gladstone Area Water Board's control and flow metering system.

In 2008-09, the Government will continue to maximise workforce participation opportunities in the Fitzroy region through:

- \$40.8 million to provide over 2.6 million hours of vocational education and training including \$700,000 to provide additional trades training places in the region as part of the Queensland Skills Plan. This is expected to create an additional 960 training places in the Fitzroy region by 2010
- \$3.8 million to upgrade training facilities at Central Queensland Institute of TAFE
- \$3.2 million to provide employment and training assistance for 303 people and employ five Indigenous Employment and Training Support Officers
- \$400,000 as part of \$1.5 million over three years for disadvantaged Queenslanders in the Fitzroy region to improve their skills and employment prospects.

Closing the gap with Indigenous communities

The Queensland Government, in partnership with the Australian Government, is committed to closing the gap between Indigenous and non-Indigenous Australians through innovative programs such as \$3.6 million in grants to 42 Community Justice Groups to empower Indigenous communities to tackle social and justice issues. An additional \$1.7 million to continue a two-year pilot of five Murri Courts including one at Rockhampton.

Further measures to enhance the health, safety and well-being of Indigenous communities include:

- \$5 million to build, purchase or upgrade homes and land for future homes for the Aboriginal and Torres Strait Islander Housing rental program
- \$2.8 million in grants to build, upgrade and maintain homes in Aboriginal and Torres Strait Islander communities
- \$800,00 State-wide to enhance Indigenous agribusiness development
- \$90,000 to reduce the over-representation of young Indigenous people in the youth justice system.

Housing affordability

The Government is committed to improving housing affordability for those Queenslanders hardest hit by the current economic environment.

In addition to the substantial tax relief introduced by the Government in 2008-09 for first home buyers, low-income families and individuals in Fitzroy will receive housing services and support in 2008-09 including:

- \$12.2 million to increase public housing availability involving purchasing or completing 11 homes and commencing construction of a further 38 homes
- \$4.4 million for community housing programs and services to address crisis and long-term housing needs.

Education and early childhood development

Giving every child every chance to learn in the best possible environment is a priority for the Government. This is reflected in our 2008-09 commitment to the Fitzroy region of an additional \$4 million for school maintenance programs and \$1.8 million in capital works investment in schools, including:

- \$1.2 million to complete a library block at Calliope State School
- \$300,000 for additional amenities at Prospect Creek State School
- \$200,000 to begin constructing additional amenities at Mount Archer State School.

Prevention and early intervention

The Queensland Government is focused on developing and supporting prevention and early intervention strategies or initiatives that are targeted to disadvantaged areas, individuals and/or population groups.

In 2008-09 the Government will commit:

- \$2.3 million to support Fitzroy families, including early intervention programs to improve the safety and wellbeing of vulnerable children and their families
- \$2 million for youth development services to build independent living skills
- \$1.1 million to provide counselling and support services for victims of domestic and family violence
- \$800,000 over four years for a Family Intervention Service which will strengthen child protection services by providing direct support to families in their own home.

Managing climate change and protecting the environment

In 2008-09 the Government will allocate \$30 million for new climate change initiatives from the proceeds of the Queensland Climate Change Fund. The first major initiative of the Climate Change Fund will be the ClimateSmart Home Service which will provide Queenslanders with tools to monitor and reduce their energy use to deliver savings in household electricity costs and reduce greenhouse gas emissions.

In 2008-09, the Government will also invest \$16.1 million to complete the \$102.5 million feasibility study for the ZeroGen project, which seeks to reduce greenhouse gas emissions in the stationary energy sector.

In conjunction with the Australian Coal Association the Government will also provide funding over 10 years for clean coal technology.

A further \$833,000 will go towards the Carnarvon Great Walk and \$386,000 to Byfield National Park to improve visitor information services and redevelop office accommodation.

In 2008-09, \$8.4 million will be provided for the day-to-day management of the Great Barrier Reef Marine Park and \$450,000 to implement the Reef Water Quality Protection Plan to halt and reverse the decline in the quality of water entering the Great Barrier Reef.



Photograph supplied courtesy of Gladstone Ports Corporation

Port of Gladstone

The Government's infrastructure investments in the Fitzroy region includes \$19.1 million for key initiatives at the Port of Gladstone. Of this, \$4.3 million will go towards dust suppression measures at the RG Tanna Terminal (pictured).

Queensland State Budget Highlights 2008–09

Budget summary

Strong economic growth maintains record low unemployment

- Economic growth in Queensland is forecast to strengthen to 4¼% in 2008-09, outstripping the nation for the 13th year in a row.
- With jobs growth again outpacing the nation, the unemployment rate is estimated to fall to a 34-year low of 3¾% in 2007-08 and remain there in 2008-09, taking it below the national rate for the fifth consecutive year.

Strong finances

- A General Government operating surplus of \$809 million is forecast in 2008-09.
- The State's net worth is budgeted to grow from \$123 billion at 30 June 2008 to over \$140 billion by 30 June 2012 – reflecting Queensland's position of holding the strongest balance sheet in the nation.
- Interest expenses in the General Government sector is budgeted at just 1.5% of revenue in 2008-09.

Competitive taxes

- Queensland maintains its competitive tax status, with taxpayers in other states and territories to pay an average of \$274 more state tax each than Queenslanders in 2008-09.
- The 2008-09 Budget provides tax relief to make housing more affordable. From 1 July 2008, the home and first home transfer duty concession thresholds will be increased from \$320,000 to \$350,000. The first home concession threshold will be further increased from 1 September so that no transfer duty will be payable on a first home valued up to \$500,000.
- Mortgage duty will be abolished in full from 1 July 2008 – another saving to those taking out home loans.
- There are also land tax cuts, including specific measures to benefit Queensland's elderly such as exempting aged-care facilities.
- While already having the nation's lowest pay-roll tax rate, further relief will benefit 6,800 businesses in Queensland.

Delivering for Queensland

The 2008-09 State Budget delivers a massive boost to health, with a record Budget allocation of \$8.352 billion.

The Budget funds new hospitals and upgrades at locations across the State. Areas of increasing demand such as emergency departments and birthing services are a key focus.

There is a \$100 million boost to school maintenance to deliver a record program for the next two years – part of the \$6 billion Budget allocation to the Department of Education and Training. This funding includes 270 new teachers and teacher aides to meet enrolment growth and 4,250 additional trade training places to help address skills shortages.

To boost front-line services, 200 new police and 250 new ambulance officers are funded. The Budget also provides for 145 new ambulance vehicles as part of a record emergency services allocation.

A new \$20 million ClimateSmart Home Service will assist Queensland households to meet the challenges of climate change.

An increase in the electricity rebate and other tax breaks will assist older Queenslanders.

With tax cuts to assist Queenslanders break into home ownership, this is a Budget focussed on the future and delivering the front-line services a growing state needs.

Government services in Fitzroy

Biloela

QGAP

60 Kariboe Street
Biloela QLD 4715
Email
manager.qgap_biloela@transport.qld.gov.au
Telephone 4992 8700
Facsimile 4992 1768
Opening Hours:
Monday to Friday – 9am to 4.30pm
Wednesday – 9.30am to 4.30pm

Emerald

Department of Natural Resources and Water

Government Offices
99 Hospital Road
Emerald QLD 4720
Telephone 4987 9300
Facsimile 4987 9333
Opening Hours:
Monday to Friday – 8.30am to 4.30pm

Gladstone

Department of Tourism, Regional Development and Industry

The Old Gladstone Post Office Building
33 Goondoon Street
Gladstone QLD 4680
Telephone 4971 2300
Facsimile 4971 2333
Opening Hours:
Monday to Friday – 8.30am to 5pm

Mount Morgan

QGAP

Mount Morgan Learning Centre (LNQ)
38 Morgan St
Mt Morgan QLD
Email mtmorgan.qgap@qld.gov.au
Telephone 4938 1359
Facsimile 4938 1083
Opening Hours: Monday, Tuesday, Thursday
Friday – 9am to 2pm
Wednesday – 9am to 1pm

Moura

QGAP

Cnr Marshall and Shirley Streets
Moura QLD 4718
Email qgmoura@transport.qld.gov.au
Telephone 4997 2244
Facsimile 4997 1388
Opening Hours:
Monday to Friday – 9am to 4.30pm
Wednesday – 10am to 4.30pm

Rockhampton

Office of Economic and Statistical Research

Ground Floor, State Government Building
209 Bolsover Street
Rockhampton QLD 4700
Telephone 4938 4486
Facsimile 4938 4488
Opening Hours:
Monday to Friday – 9am to 4.30pm

Rockhampton

Department of Tourism, Regional Development and Industry

Level 1, 149 Bolsover Street
Rockhampton QLD 4700
Telephone 4938 4572
Facsimile 4938 4986
Opening Hours:
Monday to Friday – 8.30am to 5pm

Rockhampton

Department of Primary Industries and Fisheries

22 Yeppoon Road, Parkhurst
Rockhampton QLD 4702
Telephone 4936 0211
Facsimile 4936 0345
Opening Hours:
Monday to Friday – 8.30am to 5pm

Rockhampton

Department of Communities - Fitzroy-Central West Queensland Regional Office

Level 3, State Government Building
209 Bolsover Street
Rockhampton QLD 4700
Telephone 4938 4235
Facsimile 4938 4236
Opening Hours:
Monday to Friday – 8.30am to 5pm

Rockhampton

Department of Natural Resources and Water

Level 1, State Government Building
209 Bolsover Street
Rockhampton QLD 4700
Telephone 4938 4600
Facsimile 4938 4800
Opening Hours:
Monday to Friday – 8.30am to 4.30pm

Springsure

QGAP

Eclipse Street
Springsure QLD 4722
Email courthouse.springsure@justice.qld.gov.au
Telephone 4984 1433
Facsimile 4984 1368
Opening Hours: Monday, Wednesday, Friday
– 9am to 4.30pm

Yeppoon

QGAP

Yeppoon Courthouse, Normanby Street
Yeppoon QLD 4703
Email
courthouse.yeppoon@justice.qld.gov.au
Telephone 4939 5385
Facsimile 4939 3023
Opening Hours:
Monday to Friday – 9am to 4.30pm

Other services

Smart Service Queensland

For information on all other
Government services call 13 13 04
www.qld.gov.au

State Emergency Service

Telephone 132 500

13 HEALTH

Telephone 13 43 25 84

