

Fitzroy

State Budget

05-06



Premier's Message

My Government is continuing our investment in public infrastructure and services to meet the current and future needs of all Queenslanders.

We are also committed to working to ensure we create opportunities for Queensland's future prosperity and to continue building on the Smart State's strong and stable foundations by supporting the leading edge research technologies.

This Regional Budget Statement outlines the Government's ongoing investment in the Fitzroy's regional infrastructure and details important regional initiatives in 2005-06.

My Government is meeting the needs of the people in Fitzroy through infrastructure initiatives and services, especially in the areas of transport, training, education, health and housing.

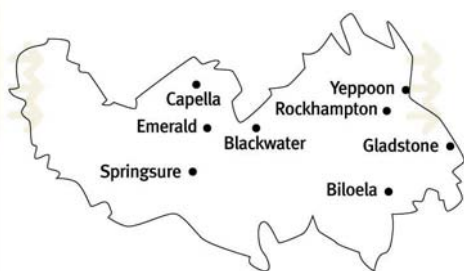
In 2005-06, our infrastructure initiatives will enable the Fitzroy region to use the opportunities the region has to offer. This Statement demonstrates a significant commitment to the long-term viability of the region.

My Government will continue to work with the people of Fitzroy to create employment and lifestyle opportunities for all Queenslanders.

Peter Beattie MP
Premier and Minister for Trade

State Budget highlights for the Fitzroy region in 2005-06 include:

- \$190.98 million to develop the RG Tanna Coal Terminal including:
 - \$42.96 million to construct additional coal stockpiles;
 - \$37 million to construct a third shiploader;
 - \$34.47 million for structural works, electricity supply upgrades and other works;
 - \$28.55 million to modify the shiploading facility;
 - \$28 million for a third dump station; and
 - \$20 million to construct a fourth berth.
- \$48.1 million, in addition to \$217.91 million already provided, for Queensland Rail Coal infrastructure projects
- \$52.18 million in acquisitions and construction projects to support Queensland Rail Freight operations
- \$5.93 million to relocate community health, oral health and mental health services to the Gladstone Hospital Campus
- \$5.5 million to construct a replacement acute care facility at Yeppoon Hospital
- \$4.8 million to refurbish the oral health building at Rockhampton Base Hospital.



→ The Fitzroy region comprises the cities of Rockhampton and Gladstone, and the shires of Banana, Bauhinia, Calliope, Duaringa, Emerald, Fitzroy, Jericho, Livingstone, Mount Morgan, Peak Downs and Woorabinda.



Queensland Government

Smart State

The Queensland Government's increased capital outlays in the 2005-06 Budget reflect our commitment to broadening our infrastructure base in order to better meet the social and economic needs of our growing population. Capital expenditure across the State in 2005-06 will be \$8 billion, an increase of 32% or \$1.9 billion, on estimated actual 2004-05 capital outlays. This allocation reflects the Government's ongoing commitment to regional and rural Queensland, with almost 60% of capital expenditure occurring outside the Brisbane Statistical Division.

Fitzroy

\$190.98 million to develop of the RG Tanna Coal Terminal including:

- ➔ \$42.96 million to expand the stockpile capacity
- ➔ \$37 million to construct a third Shiploader
- ➔ \$34.47 million for structural works, electricity supply upgrades and other works
- ➔ \$28.55 million for modifications to the shiploading facility
- ➔ \$28 million for a third dump station
- ➔ \$20 million for construction of a new fourth berth.



Image courtesy Natural Resources and Mines



Image courtesy Felix Resources

RG Tanna Coal Terminal

This Regional Budget Statement for Fitzroy highlights the Government's 2005-06 spending commitment to this region and its people. As a Government, we recognise the regions' valuable contributions to making Queensland the Smart State and providing services to over 3.9 million people. In this Budget we have allocated nearly 60% of capital expenditure outside the Brisbane Statistical Division.

The Fitzroy region covers 7% of the State. The region is home to 189,700 Queenslanders and 6.9% of the State's Indigenous population. The region's unemployment rate is 4.7%. Key industries within the Fitzroy region include manufacturing, mining, tourism, and agriculture. The industrial city of Gladstone is a major centre for aluminium production, and the site of Queensland's largest multi-cargo port. It provides an export gateway for the region's significant coal resources and agricultural produce. The region is known for hosting some of Australia's largest stud and commercial cattle sales, its gem fields, and export opportunities afforded by its manufacturing and port facilities.

Improving health care and strengthening services to the community

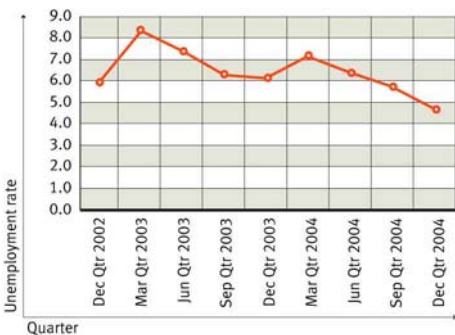
We are committed to providing better hospitals, services and health care for all Queenslanders. Our commitment to improving the standards and accessibility of health services within the Fitzroy region includes:

- \$5.93 million to relocate community health, oral health and mental health services to the Gladstone Hospital Campus
- \$3.78 million to provide new staff accommodation and increase flexibility in health care in Rockhampton
- \$1.21 million to relocate Child and Youth Mental Health Services from its current off-site location to the Rockhampton Hospital campus.

Expenditure on new and upgraded ambulance services facilities and staff in the region includes:

Unemployment rate ^a

Quarterly



Source: DEWRBSB - Small Area Labour Markets. (QRSIS database maintained by the Office of Economic and Statistical Research (OESR)).

(a) Data based on un-smoothed series.

- \$730,000 to complete the construction of the new Emu Park Ambulance Station
- \$580,000 to complete the construction of the ambulance station and residence for the Gemfields/Sapphire area.

We have committed \$9.19 million to support people with disabilities and their carers in the region including:

- \$445,000 for short term and limited respite care
- \$212,000 to assist young adults with a disability who are leaving the State's care to maintain their choice of living arrangements and to participate in their community.

Additional support of \$132,000 for community organisations will enable them to increase their capacity to continue to support people with a disability and their families.

Community groups will receive \$8.86 million to provide services in the region, including \$590,000 for child care, \$1.2 million for community support, \$1.24 million for domestic violence prevention, \$1 million for prevention and early intervention services to support vulnerable children, young people and their families, \$3.29 million to support people at risk of homelessness, \$38,000 to link older people with their community, and \$1.5 million for youth development and justice.

We are working to support low-income families and individuals through housing and housing related services. Spending in this region in 2005-06 includes:

- \$11.09 million to construct and upgrade dwellings, and to purchase land for future construction of public housing
- \$3.88 million to construct, purchase and upgrade dwellings, and purchase land for future construction of housing for Aboriginal and Torres Strait Islander people
- \$2.99 million for community housing programs and services to address crisis, transitional and long-term housing needs.

In 2005-06 the Government has funded organisations across the State to build or upgrade sport and recreation facilities. \$992,000 for projects in the Fitzroy region includes:

- \$453,000 to the Rockhampton City Council to construct a new heated learn to swim pool at the Southside Pool Complex, Rockhampton
- \$400,000 to the Rockhampton Hockey Association Inc to extend and replace the hockey surface and construct dug outs, technical benches and covered seating at North Rockhampton.

Blackdown Tablelands National Park, Blackwater



Image courtesy Queensland Tourism

Realising the Smart State through education, skills and innovation

The Premier launched the latest Smart State Strategy on 18 April 2005. *Smart Queensland: Smart State Strategy 2005-2015* establishes the strategic framework for using innovation and skills to drive economic growth to improve prosperity and quality of life for all Queenslanders. It is the centrepiece of the Queensland Government's broader economic development strategy.

In 2005-06, \$334,000 has been allocated to the BioBus, which will provide travelling biotechnology education and public awareness exhibitions to rural and regional Queensland schools. An additional \$140,000 has also been allocated in capital expenditure for ongoing enhancements of the exhibition.

The Queensland Government will provide \$400,000 in 2005-06 to support research to assess prospects for the development of a cane toad specific toxin bait by the Australian Invasive Animal Cooperative Research Centre.

We are investing in education and training infrastructure across Fitzroy for the benefit of young people and their education. In 2005-06, funding includes:

- \$2.3 million to relocate the Central Queensland Institute of TAFE-Yeppoon Campus to a site adjacent to Yeppoon State High School
- \$1.25 million to relocate the Central Queensland Institute of TAFE-Biloela

Campus to a site adjacent to Biloela State High School

- \$997,000, including \$80,000 for fit out, to upgrade a classroom to support arts initiatives at Yeppoon State High School
- \$785,000, including \$39,000 for fit out, to construct a new toilet block at Camp Fairbairn Outdoor Education Centre
- \$789,000, including \$64,000 for fit out, to provide a major resource centre upgrade to support information and communications technology initiatives at Frenchville State School.

Protecting our children and enhancing community safety

The Government is continuing to build a radically improved child protection system. A record \$394.8 million operating budget, up 45% since last year, will be spent this year to safeguard the welfare of Queensland's children. The Fitzroy region will benefit from the unprecedented increase of \$123 million for State-wide initiatives such as:

- \$28.8 million for additional permanent frontline and support staff
- \$19.6 million for extra alternative care places, extended family reunification services, foster care by non-government agencies and for sexual abuse counselling services
- \$13 million on foster care allowances and a further \$9 million for child related costs.

Augmenting this is a capital program of \$58.8 million which includes:

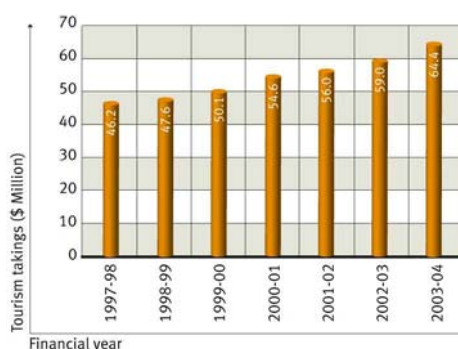
- \$25 million in additional funding over two years (\$19.2 million in 2005-06) to expand the number of Child Safety offices across the State
- \$25.3 million for the roll-out of a new IT system to better manage client files and departmental business.

Building Queensland's regions

Efficient and integrated transport networks are important for the ongoing development of regional Queensland. In the Fitzroy region, major transport infrastructure initiatives include:

Tourism

takings (\$ million), 1997-98 to 2003-04



Source: ABS, Tourist Accommodation, Queensland (8635.3.40.001 and 8635.3)

- \$3.89 million for the Central Queensland Port Authority to upgrade infrastructure services including roads, drainage and sewerage
- \$3.56 million to upgrade the Leichhardt Highway including:
 - from Pocket Creek to Blowhard Creek; and
 - sections between Westwood and Taroom.
- \$3 million to construct a roundabout at the Boyne Island Road intersection on the Gladstone to Benaraby Road.

Investment in the electricity supply system in 2005-06 includes:

- \$27.86 million to overhaul, improve and maintain Stanwell Power Station
- \$31.91 million to overhaul, improve and maintain Callide Power Station by CS Energy
- \$53 million for capital works in the Capricornia region and \$41 million for capital works in the broader Fitzroy and Central West Queensland areas by Ergon Energy
- refurbishing substations that supply the electrified rail network in the Bowen Basin area by Powerlink.

The long term viability of the region is being enhanced by infrastructure projects including:

- \$1.81 million to local governments in the region for road and drainage works
- \$6 million to extend the Gladstone State Development Area to include properties within the Targinie Valley
- \$5 million to further develop the Clinton Industrial Estate at Red Rover Road
- \$2.48 million to upgrade the Yeppoon sewage treatment plant
- \$5.27 million to construct a 42 kilometre pipeline to supply raw water and to upgrade Woorabinda's water supply infrastructure
- \$750,000 for a Sorghum processing plant at Biloela Research Station
- \$8.5 million towards the \$9.5 million Fitzroy Riverbank Transformation Project
- \$3.51 million to duplicate the pipeline between the Toolooa Booster Pump Station and Boyne Island reservoir to meet the increasing demand for treated water at Boyne Island and Tannum Sands.

The Government, in partnership with AgForce and rural Queenslanders, is also developing a Blueprint for the Bush. The Blueprint will be a long term plan which will include practical strategies to support sustainable rural communities.

Protecting the environment for a sustainable future

The natural and cultural heritage of the Fitzroy region is valued by all Queenslanders. This is reflected in our commitment of \$1.19 million to refurbish and construct:

- the access road to Starkvale in Expedition National Park
- a walking track and ladder upgrade in the Carnarvon Gorge Section and boundary fences in the Mount Moffatt Section of Carnarvon National Park
- Byfield Beach access and camping ground development in Byfield National Park
- upgraded signs in Bulburin Forest Reserve.

Growing a diverse economy and creating jobs

The unemployment rate in the Fitzroy region was 4.7% during the December quarter 2004, and has fallen by 5.0 percentage points since the December quarter 1996. The Government continues to work in partnership with the people of the Fitzroy region to build on the region's economic potential.

The Government's Breaking the Unemployment Cycle initiative provides training and job opportunities to Queenslanders. The Fitzroy region will receive around \$6.37 million to create an estimated 876 jobs through the initiative during 2005-06. \$1.48 million

Rockhampton



Exports from the port of Gladstone

gross weight - million tonnes), 1992-93 to 2003-04



Source: ABS Foreign Trade (unpublished data)

is allocated in 2005-06 to community employment programs and \$4.89 million for apprenticeship and trainee incentives to provide jobs in crucial, skills-shortage industries and the public sector.

Delivering responsive government

The Queensland Government continues to engage with local communities, businesses and other government agencies to better coordinate services and identify strategies to meet local needs, including through regular Ministerial Regional Community Forums and Community Cabinets. In addition, there will be a regional sitting of parliament in Rockhampton this year.

\$44.56 million will be spent State-wide in 2005-06 (\$125.5 million over the project life) to provide technology to improve business processes across government agencies. This project will generate long term savings and improve service delivery throughout the State.

Big River Jazz Festival



The Big River Jazz Festival continues to boost tourism in Rockhampton, with music lovers visiting the city for a three-day program of Jazz concerts. Visitors also enjoy the soothing sounds of latin, blues and soul music, with many concerts held in outdoor settings.

Budget summary

Achieving strong economic growth and historic low unemployment rates

- Queensland's year-average unemployment rate is expected to fall to a 30-year low of 5% in 2004-05 and to remain at this historically low level in 2005-06.
- Queensland's employment continues to grow and, at 5¾% and 2½%, is expected to exceed the rest of Australia in 2004-05 and 2005-06, respectively.
- The State is expected to continue to grow more rapidly than the rest of Australia in 2005-06, representing the 10th consecutive year of performance above that of the other states.

Strong finances

- A General Government net operating surplus of \$934 million is forecast in 2005-06.
- The expected 2004-05 operating result of \$2.725 billion reflects the strength of the economy and investment markets.
- Beyond 2005-06, smaller operating and cash surpluses are forecast, primarily reflecting costs associated with significant investment in new infrastructure, the abolition of a number of State taxes, and the assumption of investment returns in line with long run averages.
- The State's net worth is budgeted to grow from \$85 billion at 30 June 2005 to in excess of \$93 billion by 30 June 2009.

Competitive taxes

- Queensland's competitive tax status has been maintained, with taxpayers in other states and territories paying on average 25% more state tax than Queenslanders in 2005-06.
- A land tax relief package will significantly reduce the number of Queenslanders paying land tax and provide rate reductions for all land tax payers, at a cost of \$847 million over four years.
- Debits tax and six stamp duties will be progressively abolished, beginning 1 July 2005. Queenslanders will save \$3.5 billion over seven years from the abolition of these State taxes.

Delivering on our priorities

Improving health care and strengthening services to the community

- The health budget increases by \$413 million or 8.4%, including service enhancements across the State.
- \$115.1 million in capital funding and \$120.4 million in recurrent funding has been allocated over four years to further develop responses to homelessness.
- An additional \$180 million over four years is provided to enhance disability services, including respite, emergency and crisis care.

Realising the Smart State through education, skills and innovation

- \$80.1 million will improve the Information and Communication Technologies (ICT) environment in schools and improve ICT access and the skills of students and teachers.
- \$291.9 million in recurrent and \$62.7 million in capital funding in 2005-06 will support training initiatives under the \$1 billion SmartVET strategy, including additional traineeship places in new and emerging industries, and further funding for the Mining Centre of Excellence to reduce skills shortages affecting the Queensland mining industry.

Protecting our children and enhancing community safety

- An overall funding increase of \$123.1 million will enhance child protection services.
- Police staffing and resources will be enhanced and \$231 million is allocated over three years to upgrade and extend various correctional facilities.

Managing urban growth and building Queensland's regions

- Capital spending will be boosted to \$8 billion, \$1.9 billion more than last year's record program.
- The South East Queensland Infrastructure Plan and Program identifies capital projects amounting to around \$55 billion. Over the next four years, approximately \$2 billion is allocated over current Budget commitments.

Protecting the environment for a sustainable future

- \$58 million in recurrent funding and \$25 million in capital funding has been allocated over four years to manage an estimated additional 3.46 million hectares of Queensland Parks and Wildlife Service estate.
- \$10 million over four years will support Queensland organisations to adopt resource efficient practices to improve the way they do business.

Growing a diverse economy and creating jobs

- More than \$470 million is provided over four years to support the Government's 10-year Smart State Strategy. This includes \$136 million in recurrent and \$64 million in capital funding over four years for three new Smart State grants programs to build research centres and support innovation in fields including health and medicine, agriculture and mining.
- The Breaking the Unemployment Cycle initiative will continue to provide employment programs for Queenslanders aimed at reducing skills shortages and improving the employability of job seekers.

Government services in your region

For information on government services and activities in the Fitzroy region, please contact the offices listed below. Additional contacts are available on the Government gateway at www.qld.gov.au or by ringing Smart Service Queensland on 13 13 04.

Biloela

QGAP Office

60 Kariboe Street
Biloela QLD 4715
Telephone 4992 8700
Facsimile 4992 1768
Opening hours: Monday, Tuesday, Thursday and Friday – 9am to 4:30pm; Wednesday – 9:30am to 4:30pm

Moura

QGAP Office

Marshall & Shirley Streets
Moura QLD 4718
Telephone 4997 2244
Facsimile 4997 1388
Opening hours: Monday, Tuesday, Thursday and Friday – 9am to 4:30pm; Wednesday – 9:30am to 4:30pm

Mt Morgan

QGAP Office

Mt Morgan Learning Centre (LNQ)
38 Morgan St
Mt Morgan QLD 4714
Telephone 4938 1359
Facsimile 4938 1083
Opening hours: Monday – 11am to 7pm; Tuesday and Friday – 9am to 1pm; Wednesday and Thursday – 9am to 3pm

Springsure

QGAP Office

Eclipse Street
Springsure QLD 4722
Telephone 4984 1433
Facsimile 4984 1368
Opening hours: Monday, Wednesday and Friday – 9am to 4:30pm

Yeppoon

QGAP Office

Yeppoon Courthouse
Normanby Street
Yeppoon QLD 4703
Telephone 4939 5385
Facsimile 4939 3023
Opening hours: Monday to Friday – 9am to 4:30pm

Emerald

Department of Natural Resource and Mines – Emerald Service Centre

32 Tansey Street
Emerald QLD 4207
Telephone 3884 8020
Facsimile 3884 8079
Opening hours: Monday to Friday – 9am to 5pm.

Gladstone

State Development and Innovation Centre

The Old Gladstone Post Office Building
33 Goondoon Street
Gladstone QLD 4680
Telephone 4971 2300
Facsimile 4971 2333
Opening hours: Monday to Friday – 8:30am to 5pm

Rockhampton

Department of Communities – Fitzroy - Central West Queensland Regional Office

Level 3, State Government Building
209 Bolsover Street
Rockhampton QLD 4700
Telephone 4938 6715
Facsimile 4938 4118
Opening hours: Monday to Friday – 8:30am to 5pm

Rockhampton

Department of Natural Resource and Mines – Rockhampton Service Centre

Level 1, State Government Building
209 Bolsover Street
Rockhampton QLD 4700
Telephone 4938 4600
Facsimile 4938 4800
Opening hours: Monday to Friday – 9am to 5pm

Rockhampton

Office of Economic and Statistical Research – Rockhampton Regional Office

Level 3, State Government Building
209 Bolsover Street
Rockhampton QLD 4700
Telephone 4938 4486
Facsimile 4838 4488
Opening hours: Monday to Friday – 9am to 5pm

Rockhampton

State Development and Innovation Centre

Level 1, 149 Bolsover Street
Rockhampton QLD 4700
Telephone 4938 4572
Facsimile 4938 4986
Opening hours: Monday to Friday – 8:30am to 5pm

