

South Coast

State Budget

05-06



Premier's Message

My Government is continuing our investment in public infrastructure and services to meet the current and future needs of all Queenslanders.

We are also committed to working to ensure we create opportunities for Queensland's future prosperity and to continue building on the Smart State's strong and stable foundations by supporting the leading edge research technologies.

This Regional Budget Statement outlines the Government's ongoing investment in the South Coast's regional infrastructure and details important regional initiatives in 2005-06.

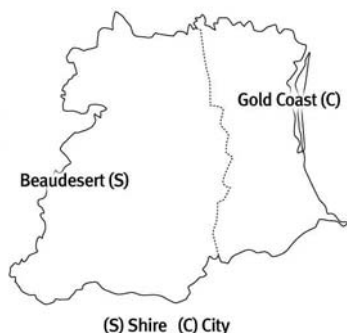
My Government is meeting the needs of the people in South Coast through infrastructure initiatives and services, especially in the areas of transport, training, education, health and housing.

In 2005-06, our infrastructure initiatives will enable the South Coast region to use the opportunities the region has to offer. This Statement demonstrates a significant commitment to the long-term viability of the region.

My Government will continue to work with the people of South Coast to create employment and lifestyle opportunities for all Queenslanders.

State Budget highlights for the South Coast region in 2005-06 include:

- \$18.26 million for additional rail track infrastructure for the Citytrain network
- \$22.76 million for new and upgraded public housing, and land for future housing construction
- \$65.64 million to upgrade the Pacific Motorway
- \$13.6 million towards the upgrade of the Gold Coast to Springbrook Road to four lanes between Palm Meadows Drive and Bourton Road and \$1.1 million to upgrade the intersection at Somerset Drive
- \$4.7 million to upgrade the Waterford to Tamborine Road and to widen and seal the Williamson Road to Albert River section
- \$26 million, including \$10 million in 2005-06 as part of the South East Queensland Infrastructure Plan and Program, to deliver improved health services in Robina
- \$17.55 million to establish the Coomera Educational Precinct of the Gold Coast Institute of TAFE.



→ The South Coast region consists of Gold Coast City (including Beenleigh) and Beaudesert Shire.



Queensland Government

Smart State

Peter Beattie MP
Premier and Minister for Trade

South East Queensland Infrastructure Plan 2005-2026

South East Queensland has been growing strongly for the past 20 years and over this period the region's population has grown by almost one million people making it the fastest growing region in Australia.

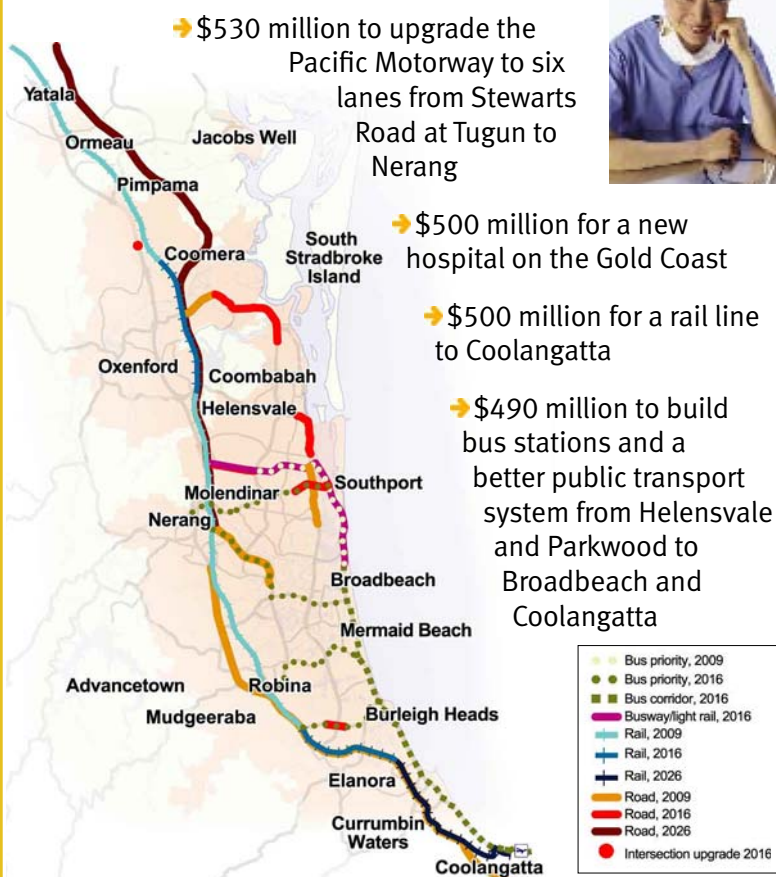
To keep pace with this growth the Queensland Government has unveiled Australia's largest and most ambitious infrastructure plan since Federation, outlining investments of up to \$55 billion in South East Queensland over the next 20 years.

South Coast Infrastructure



Image courtesy Queensland Transport

Projects include:



This Regional Budget Statement for the South Coast region highlights the Government's 2005-06 spending commitment to this region and its people. As a Government, we recognise the regions' valuable contributions to making Queensland the Smart State and providing services to over 3.9 million people. In this Budget we have allocated nearly 60% of capital expenditure outside the Brisbane Statistical Division.

The South Coast region covers 0.2% of the State. The region is home to 552,570 Queenslanders and 4.9% of the State's indigenous population. The region's unemployment rate is 4.4%. Tourism, hospitality, and the property and business service sectors contribute significantly to this region's economy, with 12% of all Queensland's businesses located in the South Coast region.

Improving health care and strengthening services to the community

We are committed to providing better hospitals, services and health care for all Queenslanders. Within the South Coast region, this commitment includes spending on initiatives such as:

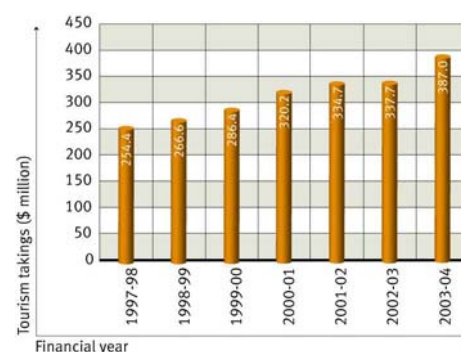
- a total of \$26 million over 3 years (\$22.58 million in 2005-06), including \$10 million as part of the South East Queensland Infrastructure Plan and Program, for health services in Robina to:
 - integrate acute health care, primary care and non-government services at the Robina Ambulatory and Community Health Campus; and
 - \$9.92 million to establish a new emergency department and intensive care unit and \$2.66 million to continue work on providing an eight chair renal dialysis treatment area at the Robina Hospital.

Expenditure on additional staff and new and upgraded emergency services facilities includes:

- \$381,000 to begin construction of the new Nerang Ambulance Station
- \$150,000 to refurbish the Hollywell Fire Station; and

Tourism

Takings (\$ million), 1997-98 to 2003-04



Source: ABS, Tourist Accommodation, Queensland (8635.3.40.001 and 8635.3)

Team Australia at 2005 Gold Coast Indy



In 2005, the Lexmark Indy 300 is celebrating its 15th year as one of Queensland's premier events. This international motor racing event revs up the Gold Coast's tourism industry in October each year.

- 11 new ambulance paramedics as part of \$4.03 million for 70 new paramedics across Queensland.

We have committed \$15.78 million to support people with disabilities and their carers in the region, including:

- \$1.57 million for short term and limited respite care
- \$624,000 to assist young adults with a disability who are leaving the State's care to maintain their choice of living arrangements and to participate in their community.

Additional support of \$122,000 for community organisations will enable them to increase their capacity to support people with a disability and their families. A further \$51,000 will enable innovative and flexible support options for people with a disability to be developed and trialled.

Community groups will receive \$8.53 million to provide services in the region, including \$478,000 for child care, \$1.23 million for community support, \$969,000 for domestic violence prevention, \$1.12 million for prevention and early intervention services to support vulnerable children, young people and their families, \$3.27 million to support people at risk of homelessness, \$72,000 to link older people with their community and \$1.39 million for youth development and justice.

We are working to support low-income families and individuals through housing and housing related services. Spending in this region in 2005-06 includes:

- \$22.76 million for new and upgraded public housing, and land for future public housing construction
- \$2.77 million for community housing programs and services to address transitional and long-term housing needs

- \$981,000 to construct, purchase and upgrade Aboriginal and Torres Strait Islander rental housing.

In 2005-06 the Government has funded organisations across the State to build or upgrade sport and recreation facilities. \$1.41 million for projects in the South Coast region includes:

- \$424,000 to the Gold Coast City Council to construct six touch football fields at Coomera
- \$450,000 to the Gold Coast City Council to construct 2.3 kilometres of walkways and cycleways through Pizzey Park, Miami.

Realising the Smart State through education, skills and innovation

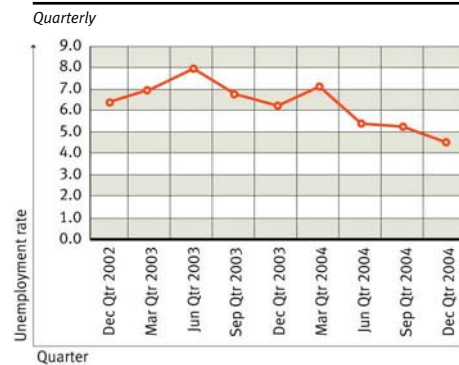
The Premier launched the latest Smart State Strategy on 18 April 2005. *Smart Queensland: Smart State Strategy 2005-2015* establishes the strategic framework for using innovation and skills to drive economic growth to improve prosperity and quality of life for all Queenslanders.

In 2005-06, \$334,000 has been allocated to the BioBus, which will provide travelling biotechnology education and public awareness exhibitions to rural and regional Queensland schools. An additional

Gold Coast Convention Centre



Unemployment rate ^a



Source: DEWRBS - Small Area Labour Markets. (QRSIS database maintained by the Office of Economic and Statistical Research (OESR)).

(a) Data based on un-smoothed series.

\$140,000 has also been allocated in capital expenditure for ongoing enhancements of the exhibition.

The Government will provide \$400,000 in 2005-06 to support research to assess prospects for the development of a cane toad specific toxin bait by the Australian Invasive Animal Cooperative Research Centre.

We are investing in education and training infrastructure across the South Coast for the benefit of young people and their education. In 2005-06, funding includes:

- \$500,000 to relocate the Gold Coast Institute of TAFE training facilities from the Ridgeway Campus to Ashmore and Coomera Campuses, with a total State Government contribution of \$4.1 million over the project's life
- \$17.55 million to establish the Coomera Educational Precinct of the Gold Coast Institute of TAFE to deliver high technology training, providing links to other industry and educational facilities in the area
- an additional \$6.46 million, to bring to \$12 million, including \$960,000 for fit out, to build a replacement school for the Coolangatta Special School
- \$5.8 million in total, including \$464,000 for fit out, to construct stages five and six of Flagstone State Community College
- \$992,000, including \$79,000 for fit out, to upgrade classrooms at Elanora State School.

Protecting our children and enhancing community safety

The Government is continuing to build a radically improved child protection system. A record \$394.8 million operating budget, up 45% since last year, will be spent this year to safeguard the welfare of Queensland's children. The South Coast region will benefit from the unprecedented increase of \$123 million for State-wide initiatives such as:

- \$28.8 million for additional permanent frontline and support staff
- \$19.6 million for extra alternative care places, extended family reunification services, foster care by non-government agencies and for sexual abuse counselling services

- \$13 million on foster care allowances and a further \$9 million for child related costs
- \$22.6 million for therapeutic services including, child psychology and speech pathology to children in care with complex needs.

Augmenting this is a capital program of \$58.8 million which includes:

- \$25 million in additional funding over two years (\$19.2 million in 2005-06) to expand the number of Child Safety offices across the State
- \$25.3 million for the roll-out of a new IT system to better manage client files and departmental business.

Investment to enhance community safety within the South Coast region includes \$5.75 million to complete the replacement Southport Police Station and \$2.56 million to establish Neighbourhood Police Beats in Arundel, Biggera Waters, Edens Landing, Jacobs Well and Pacific Pines.

Managing urban growth and building Queensland's regions

The South East Queensland Infrastructure Plan and Program outlines the Queensland Government's infrastructure priorities to support the South East Queensland Regional Plan. Infrastructure funding in 2005-06 is the first stage of implementing the plan.

Efficient and integrated transport networks are important for the ongoing development of regional Queensland. In the South Coast region, major transport infrastructure initiatives include:

- \$18.26 million for additional rail track infrastructure for the Citytrain network
- \$4.3 million to construct bus priority measures and bus stations along the Gold Coast Highway from Broadbeach to Miami
- \$1 million towards planning a rapid transit system between Parkwood and Broadbeach to increase access through reliable, high-frequency public transport on the Gold Coast

- \$937,000 to upgrade the Gold Coast Sand Bypass Jetty
- \$28.7 million for an integrated public transport ticketing system including the development of a smartcard
- \$13.36 million to upgrade the Nerang to Broadbeach Road including:
 - between Allambe Cemetery and Ross Street; and
 - between Ross Street and Nielsens Road.
- \$14.4 million to upgrade the Gold Coast Highway including:
 - the Robert Street to Stevens Street section;
 - road markings and signs from Helensvale to Arundel;
 - intersection improvement at Burleigh Town Centre;
 - Broadbeach South bus priority section;
 - 27th Avenue to 19th Avenue;
 - intersection improvement at Toolona Street; and
 - Stevens Street to Government Road.

Investment in the electricity network in 2005-06 system includes:

- \$56.2 million to reinforce the Gold Coast transmission line and the Molendinar substation by Powerlink
- \$76 million to construct a new substation at Jimboomba and augment existing major supply points in the Gold Coast area by ENERGEX.

The long term viability of the region is being enhanced by new infrastructure projects including:

- \$2.5 million to local governments in the region for road and drainage works
- \$3.44 million to develop the Arundel Industrial Park at the Gold Coast for low impact industry
- \$630,000 for the Logan River Parklands project.

Protecting the environment for a sustainable future

The natural and cultural heritage of the South Coast region is valued by all Queenslanders. This is reflected in our commitment of \$2.05 million to improve National and Conservation parks including:

- redeveloping Fleay's Wildlife Park Conservation Park
- new toilet blocks at Green Mountain and Binna Burra day use areas, and shelter sheds at Binna Burra
- the Hinterland Great Walk in Lamington National Park
- signage and information at entrances in Burleigh Head National Park
- replacement signage and upgrading of visitor facilities in Springbrook National Park.

Beaudesert Country & Horse Festival



The annual Beaudesert Country and Horse Festival is recognised throughout Australia for its exciting range of events including bull riding, spectacular search and battle of the trail ride and the Parade.



Growing a diverse economy and creating jobs

The unemployment rate in the South Coast region was 4.4% during the December quarter 2004, and has fallen by 8.9 percentage points since the December quarter 1996. The Government continues to work in partnership with the people of the South Coast region to build on the region's economic potential.

The Government's Breaking the Unemployment Cycle initiative provides training and job opportunities to Queenslanders. The South Coast region will receive around \$5.54 million to create an estimated 882 jobs through the initiative during 2005-06. \$2.66 million is allocated in 2005-06 to community employment programs and \$2.88 million for apprenticeship and trainee incentives to provide jobs in crucial, skills-shortage industries and the public sector.

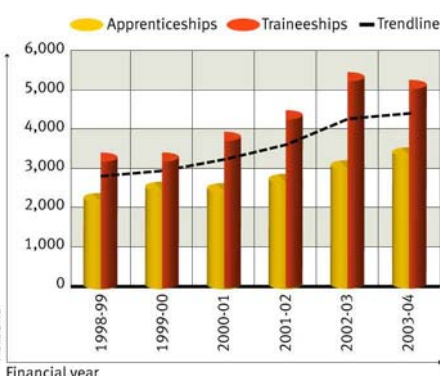
Delivering responsive government

The Queensland Government continues to engage with local communities, businesses and other government agencies to better coordinate services and identify strategies to meet local needs, including through regular Ministerial Regional Community Forums and Community Cabinets.

\$44.56 million will be spent State-wide in 2005-06 (\$125.5 million over the project life) to provide technology to improve business processes across government agencies. This project will generate long term savings and improve service delivery throughout the State.

Participation in post secondary education, apprenticeships and traineeships

1998-99 to 2003-04



Source: DET, Apprenticeships and traineeships, (unpublished data)

Budget summary

Achieving strong economic growth and historic low unemployment rates

- Queensland's year-average unemployment rate is expected to fall to a 30-year low of 5% in 2004-05 and to remain at this historically low level in 2005-06.
- Queensland's employment continues to grow and, at 5¾% and 2½%, is expected to exceed the rest of Australia in 2004-05 and 2005-06, respectively.
- The State is expected to continue to grow more rapidly than the rest of Australia in 2005-06, representing the 10th consecutive year of performance above that of the other states.

Strong finances

- A General Government net operating surplus of \$934 million is forecast in 2005-06.
- The expected 2004-05 operating result of \$2.725 billion reflects the strength of the economy and investment markets.
- Beyond 2005-06, smaller operating and cash surpluses are forecast, primarily reflecting costs associated with significant investment in new infrastructure, the abolition of a number of State taxes, and the assumption of investment returns in line with long run averages.
- The State's net worth is budgeted to grow from \$85 billion at 30 June 2005 to in excess of \$93 billion by 30 June 2009.

Competitive taxes

- Queensland's competitive tax status has been maintained, with taxpayers in other states and territories paying on average 25% more state tax than Queenslanders in 2005-06.
- A land tax relief package will significantly reduce the number of Queenslanders paying land tax and provide rate reductions for all land tax payers, at a cost of \$847 million over four years.
- Debits tax and six stamp duties will be progressively abolished, beginning 1 July 2005. Queenslanders will save \$3.5 billion over seven years from the abolition of these State taxes.

Delivering on our priorities

Improving health care and strengthening services to the community

- The health budget increases by \$413 million or 8.4%, including service enhancements across the State.
- \$115.1 million in capital funding and \$120.4 million in recurrent funding has been allocated over four years to further develop responses to homelessness.
- An additional \$180 million over four years is provided to enhance disability services, including respite, emergency and crisis care.

Realising the Smart State through education, skills and innovation

- \$80.1 million will improve the Information and Communication Technologies (ICT) environment in schools and improve ICT access and the skills of students and teachers.
- \$291.9 million in recurrent and \$62.7 million in capital funding in 2005-06 will support training initiatives under the \$1 billion SmartVET strategy, including additional traineeship places in new and emerging industries, and further funding for the Mining Centre of Excellence to reduce skills shortages affecting the Queensland mining industry.

Protecting our children and enhancing community safety

- An overall funding increase of \$123.1 million will enhance child protection services.
- Police staffing and resources will be enhanced and \$231 million is allocated over three years to upgrade and extend various correctional facilities.

Managing urban growth and building Queensland's regions

- Capital spending will be boosted to \$8 billion, \$1.9 billion more than last year's record program.
- The South East Queensland Infrastructure Plan and Program identifies capital projects amounting to around \$55 billion. Over the next four years, approximately \$2 billion is allocated over current Budget commitments.

Protecting the environment for a sustainable future

- \$58 million in recurrent funding and \$25 million in capital funding has been allocated over four years to manage an estimated additional 3.46 million hectares of Queensland Parks and Wildlife Service estate.
- \$10 million over four years will support Queensland organisations to adopt resource efficient practices to improve the way they do business.

Growing a diverse economy and creating jobs

- More than \$470 million is provided over four years to support the Government's 10-year Smart State Strategy. This includes \$136 million in recurrent and \$64 million in capital funding over four years for three new Smart State grants programs to build research centres and support innovation in fields including health and medicine, agriculture and mining.
- The Breaking the Unemployment Cycle initiative will continue to provide employment programs for Queenslanders aimed at reducing skills shortages and improving the employability of job seekers.

Government services in your region

For information on government services and activities in the South Coast region, please contact the offices listed below. Additional contacts are available on the Government gateway at www.qld.gov.au or by ringing Smart Service Queensland on 13 13 04.

Beaunesert

QGAP Office

Centre 9, William Street
Beaunesert QLD 4285
Telephone 5542 9400
Facsimile 5541 3750
Opening hours: Monday, Tuesday,
Thursday, Friday – 9am to 4:30pm;
Wednesday – 10am to 4:30pm

Beenleigh

Department of Natural Resources and Mines – Beenleigh Service Centre

32 Tansey Street
Beenleigh QLD 4207
Telephone 3884 8020
Facsimile 3884 8079
Opening hours: Monday to Friday
– 9am to 5pm

Beenleigh

State Development and Innovation Centre

96 George Street
Beenleigh QLD 4207
Telephone 3287 8585
Facsimile 3287 8589
Opening hours: Monday to Friday
– 8:30am to 5pm

Bundall

Department of Natural Resources and Mines – Bundall Service Centre

Level 1, West Tower
Waterside Office Park Holden Place
Gold Coast MC QLD 4217
Telephone 5538 1700
Facsimile 5574 1964
Opening hours: Monday to Friday
– 9am to 5pm

Gold Coast

Department of Communities – Gold Coast Regional Office

Pacific Square Shop 12
2520 Gold Coast Highway
Mermaid Beach QLD 4218
Telephone 5562 7100
Facsimile 5562 7129
Opening hours: Monday to Friday
– 8:30am to 5pm

Gold Coast

State Development and Innovation Centre

Ground Floor 26 Marine Parade
Southport QLD 4215
Telephone 5583 7599
Facsimile 5583 7591
Opening hours: Monday to Friday
– 8:30am to 5pm

Ipswich

Department of Communities – Moreton Regional Office

(Services Beaunesert Shire residents)
5-7 Wharf Street
Ipswich QLD 4305
Telephone 3280 1777
Facsimile 3280 1962
Opening hours: Monday to Friday
– 8:30am to 5pm

Brisbane

Department of Local Government and Planning – Women's InfoLink

Level 2, 52 Queen Street
Brisbane QLD 4002
Toll Free 1800 177 577
Facsimile 1800 000 658
Opening hours: Monday to Friday
– 9am to 5pm

Brisbane

Department of Natural Resources and Mines – LandCentre Service Centre

Level 2, LandCentre Service Centre
Cnr Main and Vulture Streets
Woolloongabba QLD 4102
Telephone 3896 3216
Facsimile 3896 3333
Opening hours: Monday to Friday
– 9am to 5pm

Brisbane

Office of Economic and Statistical Research

Level 8, 33 Charlotte Street
Brisbane QLD 4002
Telephone 3224 5326
Facsimile 3227 7437
Opening hours: Monday to Friday
– 9am to 5pm

Brisbane

Office of Urban Management and Infrastructure Coordination

Level 4, 61 Mary Street
Brisbane QLD 4001
Telephone 3247 5446
Facsimile 3235 4563
Opening hours: Monday to Friday
– 9am to 5pm

