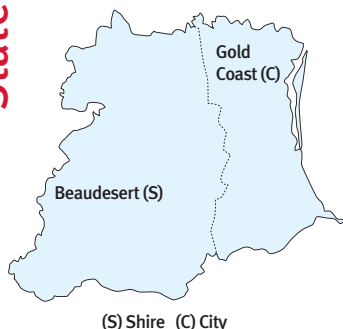




## Regional Budget Statement

# South Coast

### State Budget 2006-07



*The South Coast region consists of Gold Coast City (including Beenleigh) and Beaudesert Shire.*



The 2006-07 Budget re-affirms our Government's commitment to strengthening the Smart State's economy and investing in infrastructure and service delivery priorities.

This Regional Budget Statement outlines how we are meeting the needs of South Coast residents.

Through the Health Action Plan, we are committing \$9.7 billion in just over five years to build Australia's best health system.

To meet the needs of our growing population, we are investing in State-wide infrastructure, especially in rural Queensland where the Blueprint for the Bush will deliver health, water and transport facilities.

Ensuring the Smart State's future, Prep Year will begin in 2007 to give our children the best education.

We are also continuing our response to residents affected by Cyclone Larry and working towards a brighter future for all Queenslanders.

Peter Beattie MP  
Premier of Queensland

Anna Bligh MP  
Deputy Premier and Treasurer

### State Budget highlights for the South Coast region in 2006-07 include:

- \$39.6 million towards extension of the Gold Coast rail line from Robina to Varsity Lakes and constructing second rail tracks from Ormeau to Coomera and Helensvale to Robina
- \$33.8 million to continue construction of a new emergency department, intensive care unit and haemodialysis treatment area at Robina Hospital
- \$10.7 million over three years to construct a new police District Office at Coomera
- \$6.05 million to fund Drug Court programs in Beenleigh and Southport
- \$5.24 million for community organisations to support individuals with a disability and their families
- \$3.2 million to refurbish cardiac facilities at the Gold Coast Hospital and \$2.12 million to complete the emergency department upgrade
- \$3 million investment in West Pacific Pines State School opening in 2008.

# South Coast



With a 25,000 seat capacity, the Gold Coast Stadium is scheduled to kick off in 2008 when it becomes home to the Titans National Rugby League team.

## South Coast infrastructure

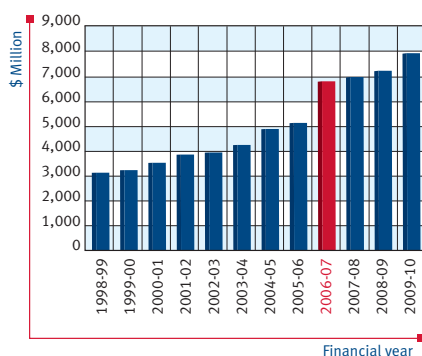
South East Queensland is the fastest growing region in Australia, with around 1,000 people moving to the region each week.

To meet the challenge of managing sustainable growth over the next 20 years, the *South East Queensland Infrastructure Plan and Program 2006-2026* outlines the Government's expected \$66 billion investment in this region for road and public transport projects, social and community infrastructure and water and energy network infrastructure projects planned for the next two decades. Funding in 2006-07 for the South Coast region includes:

- \$190 million to continue constructing the Tugun Bypass
- \$72 million to continue building the \$160 million, 25,000 seat Gold Coast Stadium at Robina
- \$19.1 million to commence site works and construction of the new Coomera campus of the Gold Coast Institute of TAFE
- \$2.5 million for planning the upgrade of the Pacific Motorway to six lanes from Stewarts Road at Tugun to Nerang
- \$1.7 million to commence planning and works on new bus stations and an improved public transport system from Helensvale/Parkwood to Broadbeach and Coolangatta.

## Building a better health system

Queensland health budget  
1998-99 to 2009-10



Source: Queensland Treasury

The Government is reforming the Queensland health system. The 2005 Action Plan marked a new start with the biggest single injection of funding in the

State's history. In 2006-07, the health budget of \$6.65 billion represents a 24% increase over the 2005-06 Budget. Increased health expenditure within the South Coast region includes:

- \$4.5 million, from over \$60 million State-wide, toward the treatment and care of cancer patients
- \$2.57 million towards the enhancement of haemodialysis services in the Gold Coast area
- \$1.73 million, from a State-wide commitment of \$18 million, to support community mental health services by employing additional specialist mental health staff
- \$1.5 million, from a State-wide commitment of \$39 million, for enhanced cardiac services.

As a result of funding increases for health services, the region will receive an increase of more than 190 staff and 15 beds in the Gold Coast and Logan-Beaudesert health service districts.

Covering 0.2% of the State, the South Coast region is home to 543,370 Queenslanders. Tourism, hospitality and the property and business service sectors make significant contributions to the local economy.

As a Government, we recognise the valuable contribution of the South Coast to the Smart State's economy. With nearly 60% of the Government's 2006-07 capital expenditure allocated outside the Brisbane area, this Regional Budget Statement for the South Coast highlights the Government's commitment to the region and its people.

## Improving health care and strengthening services to the community

We are committed to providing better hospitals, services and health care for all Queenslanders. Within the South Coast region, this commitment includes:

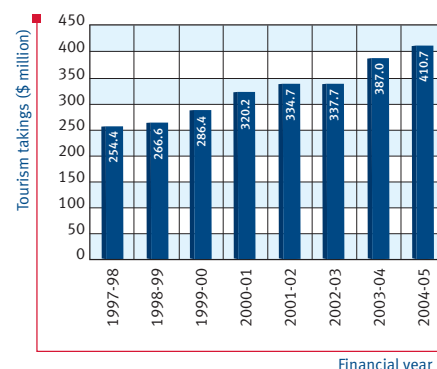
- \$33.8 million to continue constructing the emergency department, intensive care unit and haemodialysis treatment area at Robina Hospital
- \$3.2 million to refurbish cardiac facilities at the Gold Coast Hospital and \$2.12 million to complete the emergency department upgrade
- more than \$3 million to non-Government organisations for a range of community health services
- \$1.32 million to begin the Robina Ambulatory and Community Health Campus to integrate acute health care, primary care and other non-Government services
- \$1.07 million to provide nine additional renal haemodialysis places on the Gold Coast.

The South Coast will also benefit from a range of State-wide commitments including:

- \$70 million for new health technology equipment
- \$69.3 million to meet the increasing cost of providing existing health services

## Tourism

takings (\$ million), 1997-98 to 2004-05



Source: ABS, Tourist Accommodation, Queensland (8635.3.40.001 and 8635.3)

Mondial Australian Women's Hardcourts



- \$25.4 million in increased funding for workforce training and recruitment initiatives for medical, nursing and allied health staff
- \$12.3 million to improve access and meet growing demand for renal services.

Expenditure on new and upgraded emergency facilities and staffing includes:

- \$9 million as part of a \$35.3 million three-year commitment to recruit 144 new ambulance officers across Queensland
- 18 new paramedics for the region, fulfilling the Government's \$35.9 million election commitment to recruit 240 extra paramedics State-wide over three years
- \$980,000 towards refurbishment of the Southport Fire Station.

The Government is continuing its support for people with disabilities and their carers with a \$17.67 million commitment on the South Coast including:

- \$5.24 million for community organisations to support individuals with a disability and their families
- \$5.17 million to assist adults with a disability to maintain the living arrangements of their choice and participate in the community

- \$1.66 million to provide short term and limited respite support for families, carers and people with a disability.

In 2006-07, the Government continues its support for services provided by community groups on the South Coast with funding of \$11.17 million. This includes: \$1.29 million for early intervention and family support services; \$1.17 million toward domestic and family violence prevention; and \$480,000 for child care facilities and services.

We are providing ongoing housing and housing-related services to support low-income families and individuals on the South Coast in 2006-07, including:

- \$18.66 million for new and upgraded public housing and the purchase of land for future construction
- \$2.98 million in grants for community housing programs and services to address crisis, transitional and long-term housing needs
- \$1.03 million for the Aboriginal and Torres Strait Islander Housing rental program.

Residents and visitors to the Gold Coast will continue to benefit from the State-wide allocation of \$1.62 million to continue removing large and potentially dangerous sharks from 84 popular beaches.

Realising the Smart State through education, skills and innovation

The Government continues to drive economic growth by utilising innovation and skills through its *Smart Queensland: Smart State Strategy 2005–2015*. In 2006-07, initiatives on the South Coast include:

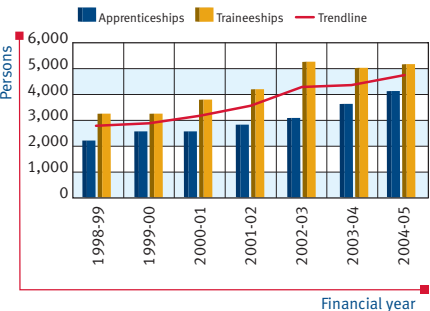
- \$500,000 over four years to establish a technology incubator at Griffith University on the Gold Coast
- \$150,000 State-wide to continue the Science on Saturday program to encourage children to understand the importance of science and take an interest in science as a possible future career.

We are committed to providing high-quality education facilities to support Queensland's growing population. In 2006-07, \$18.88 million is allocated to the South Coast for school capital works including:

- \$5.4 million for Upper Coomera State College
- \$3 million investment in West Pacific Pines State School opening in 2008
- \$2.8 million to provide four classrooms and amenities at Mudgeeraba Special School.

Participation in post secondary education, apprenticeships and traineeships

1998-99 to 2004-05



Source: DET, Apprenticeships and traineeships, (unpublished data)

Protecting our children and enhancing community safety

The Government continues to implement significant reforms to improve the child protection system. A record \$503.1 million, up almost 28% since last year, will be spent in 2006-07 to protect our children.

The region will benefit from a range of State-wide initiatives including:

- \$15.6 million to continue to support Aboriginal and Torres Strait Islander Recognised Entities
- \$10 million for non-Government partners to deliver extra alternative care places for children in care with complex and extreme needs
- \$7.6 million for an extra 50 front-line staff and to attract and retain child protection staff in regional, rural and remote areas.



Get set for Prep

Preparatory Year will be available at all State schools from 2007 to help Queensland kids make a smooth transition to Year 1. Replacing preschool, it will lay the foundation for success at school by developing a positive approach to learning; independence and confidence; thinking, problem-solving and language skills; physical abilities; and early literacy and numeracy. To prepare for the intake of eager young students, the Queensland Government is undertaking one of the largest building programs in education history. Across the State, \$106 million will be spent on building and upgrading classrooms and other facilities, with 68 schools offering Prep Year in the South Coast region.



## Lexmark Indy 300



Image courtesy of BAM Media

Lexmark Indy 300 is on track for another huge year, with anticipated crowds of 160,000 and an expected \$50.43 million contribution to Queensland's economy.

We are also investing in initiatives to boost our police service, with the number of police officers across Queensland reaching 9,728 by September 2007 through the creation of an extra 350 police officer positions. This will more than meet the Government's commitment to maintain police numbers at or above the national average police-to-population ratio.

The Government is providing funding for services and infrastructure to enhance community safety on the South Coast. Key projects for 2006-07 include:

- \$10.7 million over three years to construct a new police District Office at Coomera
- \$6.05 million to fund Drug Court programs in Beenleigh and Southport
- \$1.3 million to establish Police Beats at Logan Village, Broadwater and Norfolk Village.

## Managing urban growth and building Queensland's regions

Efficient and integrated transport networks are essential for the ongoing development of regional Queensland. On the South Coast, major transport infrastructure initiatives include:

- \$39.6 million towards extension of the Gold Coast rail line from Robina to Varsity Lakes and constructing second rail tracks from Ormeau to Coomera and Helensvale to Robina
- \$21.57 million to continue duplicating Nerang-Broadbeach Road
- \$20.95 million to improve the Gold Coast Highway
- \$11.55 million towards duplicating Hope Island Road.

The Government continues to ensure a reliable energy supply through its investment in the electricity network in 2006-07, including:

- \$123.7 million in capital works by ENERGEX, including \$14 million to boost network capacity and improve reliability
- \$55 million for the South East Queensland Augmentation project across the South Coast, Darling Downs and West Moreton and Greater Brisbane regions.

The Government is also managing the State's water resources and ensuring a continuing water supply through a range of initiatives including:

- \$69 million for land acquisitions for new water infrastructure, including two new dams on the Logan and Mary Rivers
- \$12.83 million State-wide in 2006-07 as part of the Water Reform — Continuity of Supply initiative
- \$4 million to finalise land acquisition for a weir on the Logan River.

Queenslanders enjoy a lifestyle with a high level of community participation in a range of sporting activities. In the South Coast region, \$1.8 million is allocated to projects including: \$989,693 to construct an outdoor synthetic lawn bowls green, at Paradise Point; \$306,750 to redevelop the existing skate bowl at Nerang; and \$92,248 to upgrade lighting to three fields at Cos Zantiotis Park, Labrador.

## Protecting the environment for a sustainable future

The natural and cultural heritage of the South Coast is valued by all Queenslanders. To reflect this, we are committing:

- \$20 million to buy back land with high conservation values in South East Queensland
- \$12.8 million State-wide to complete the implementation of the new vegetation management framework
- \$3.47 million to enhance our beaches and national parks network in the region.

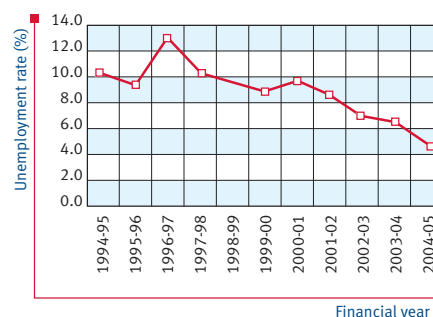
## Growing a diverse economy and creating jobs

Launched in March 2006, the \$1 billion *Queensland Skills Plan* is the Government's strategy for responding to skills shortages across Queensland. This strategy will ensure the vocational education and training sector meets the skills challenges facing the South Coast region. In 2006-07, the plan will deliver:

- \$1.16 million for new trade apprenticeships as part of a \$8.83 million plan to provide 2,360 extra training places in the region by 2010
  - \$1.3 million for new Certificate IV and above training places as part of a \$9.07 million plan to provide 1,990 additional training places in the region by 2010
  - a new Skilling Solutions Queensland centre at Southport to provide face-to-face advice to Queenslanders on training and career opportunities.
- Other Government initiatives to create and protect jobs in the region include:
- \$6 million State-wide for the 14 Regional Tourism Offices and six Convention Bureaus to promote Queensland's tourism industry, with an extra \$1 million for destination marketing and development
  - \$11.4 million to stage the 2007 Lexmark Indy 300 on the Gold Coast.

### Unemployment rate<sup>a</sup>

1994-95 to 2004-05



Source: DEWRB - Small Area Labour Markets. (QRSIS database maintained by the Office of Economic and Statistical Research (OESR))

(a) Data based on un-smoothed series

## Delivering responsive government

The Government's continuing commitment to restore public trust and accountability in the Queensland public health system includes \$7.7 million to establish a new Health Quality and Complaints Commission.

Through initiatives such as regular Ministerial Regional Community Forums and Community Cabinets, the Queensland Government engages with local communities, businesses and other government agencies to ensure better co-ordination of services and to respond to local needs.

# Budget Highlights 2006-07

## Budget summary

### Stronger economic growth maintains low unemployment

- Queensland's economic growth is forecast to strengthen to 4¼% in 2006-07 and exceed growth in the rest of Australia for the 11th consecutive year.
- Employment growth is expected to exceed the rest of Australia in 2005-06 and 2006-07 at 3% and 2½% respectively.
- As a result, Queensland's year-average unemployment rate is forecast to remain at 5% – around the 30-year low, and slightly below the national rate (5¼%).

### Strong finances

- The expected 2005-06 operating result of \$2.853 billion reflects the strength of the economy and investment markets.
- A General Government operating surplus of \$245 million is forecast in 2006-07.
- Moderating surpluses reflect significant capital investment, implementation of the Health Action Plan and commitments in other key service delivery areas, and the impact of a range of State tax abolition and relief measures.
- The State's net worth is budgeted to grow from around \$96 billion at 30 June 2006 to over \$107 billion by 30 June 2010.

### Competitive taxes

- Queensland maintains its tax competitiveness, with Queenslanders to pay an average of 15% less State tax than taxpayers in other states and territories in 2006-07.
- Queensland's competitiveness has been enhanced through a range of tax measures in the 2006-07 Budget.

## Delivering on our priorities

### Improving health care and strengthening services to the community

- As part of the Queensland Government's commitment to the Health Action Plan, an investment of almost \$6.4 billion in just over five years was announced in 2005 to relieve pressure on health services delivered across the State. Through the 2006-07 State Budget, funding for Queensland Health will grow by \$9.7 billion over the five years.
- Increased recurrent funding of \$128 million and \$6 million in capital funding will be invested over four years to enhance disability services in Queensland.
- More than \$21 million is committed over the next three years to help fight obesity.

### Protecting our children and enhancing community safety

- Additional funding of \$133.2 million will be invested over four years to enhance child protection services, including \$28.1 million in 2006-07.
- The Government is providing funding for an additional 350 sworn police officers across the State by September 2007, bringing the total number of sworn officers to 9,728 and meeting the Government's commitment to maintain police numbers at or above the national average police-to-population ratio.
- An additional \$35.3 million is provided over three years to recruit 144 additional ambulance officers and \$12.4 million over four years to improve ambulance call response times at communication centres.

### Realising the Smart State through education, skills and innovation

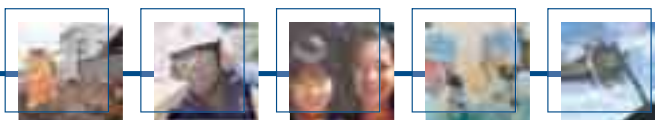
- A record \$1 billion will be invested over five years in Queensland's education system, directed at planning, modernising and refurbishing school facilities across the State.
- The \$1 billion *Queensland Skills Plan* sets out initiatives to transform and modernise the State's vocational education and training system.
- Further funding of \$11.8 million is allocated over three years to develop a joint animal research facility with The University of Queensland.

### Protecting the environment for a sustainable future

- As part of the Blueprint for the Bush, additional funding of \$11 million over three years is provided to improve the management of high-risk weeds and pest animals across Queensland.
- Additional funding of \$20 million is provided in 2006-07 to acquire properties within South East Queensland to increase green space. The land will be added to the protected estate.

### Managing urban growth and building Queensland's regions

- Estimated capital spending is more than \$10 billion in 2006-07, an increase of 23% on estimated actual 2005-06 outlays. Almost 60% of this will be spent outside the Brisbane area. This spending will support around 73,700 full-time jobs in Queensland.
- More than \$150 million is provided for additional initiatives across rural and regional Queensland over the next four years as part of Blueprint for the Bush.



# Government services in your region

## Beaudesert

### QGAP Office

Centre 9, William Street  
Beaudesert QLD 4285  
Telephone 5542 9400  
Facsimile 5542 9450  
Opening hours:  
Monday, Tuesday, Thursday,  
Friday – 9am to 4:30pm;  
Wednesday – 10am to 4:30pm

## Beenleigh

### Department of Natural Resources, Mines and Water

32 Tansey Street  
Beenleigh QLD 4207  
Telephone 3884 8020  
Facsimile 3884 8079  
Opening hours:  
Monday to Friday –  
8:30am to 4:30pm

## Beenleigh

### State Development Centre

96 George Street  
Beenleigh QLD 4207  
Telephone 3287 8585  
Facsimile 3287 8589  
Opening hours:  
Monday to Friday – 8:30am to 5pm

## Robina

### Department of Natural Resources, Mines and Water

Level 1, APVC Building  
198 Robina Town Centre Drive  
Robina QLD 4226  
Telephone 5583 1700  
Facsimile 5583 1744  
Opening hours:  
Monday to Friday –  
8:30am to 4:30pm

## Gold Coast

### Department of Communities

Level 1, APVC Building  
198 Robina Town Centre Drive  
Robina QLD 4226  
Telephone 5583 4400  
Facsimile 5583 4429  
Opening hours:  
Monday to Friday – 8:30am to 5pm

## Gold Coast

### State Development Centre

Ground Floor, 26 Marine Parade  
Southport QLD 4215  
Telephone 5583 7599  
Facsimile 5583 7591  
Opening hours:  
Monday to Friday – 8:30am to 5pm

## Ipswich

### Department of Communities – Moreton Regional Office

(services Beaudesert Shire residents)  
5-7 Wharf Street  
Ipswich QLD 4305  
Telephone 3280 1777  
Facsimile 3280 1962  
Opening hours:  
Monday to Friday – 8:30am to 5pm

## Brisbane

### Department of Local Government, Planning, Sport and Recreation – Women's Infolink

Level 2, 52 Queen Street  
Brisbane QLD 4000  
Toll free 1800 177 577  
Facsimile 1800 000 658  
Opening hours:  
Monday to Friday – 9am to 5pm

## Brisbane

### Department of Natural Resources, Mines and Water – LandCentre Service Centre

Level 2, Cnr Main and Vulture Streets  
Woolloongabba QLD 4102  
Telephone 3896 3216  
Facsimile 3896 3333  
Opening hours:  
Monday to Friday –  
8:30am to 4:30pm

## Brisbane

### Office of Economic and Statistical Research

Level 8, 33 Charlotte Street  
Brisbane QLD 4000  
Telephone 3224 5326  
Facsimile 3227 7437  
Opening hours:  
Monday to Friday – 9am to 5pm

## Brisbane

### Office of Urban Management

Level 4, 61 Mary Street  
Brisbane QLD 4000  
Toll free 1800 021 818  
Facsimile 3235 4563  
Opening hours:  
Monday to Friday – 9am to 5pm

## Preparatory Year enquiries

Telephone 1300 650 220  
Facsimile 3247 3988

## 13 HEALTH

Telephone 13 43 25 84

## Smart Service Queensland

For information on all other  
Government services call 13 13 04