

Western Queensland

State Budget

05-06



Premier's Message

My Government is continuing our investment in public infrastructure and services to meet the current and future needs of all Queenslanders.

We are also committed to working to ensure we create opportunities for Queensland's future prosperity and to continue building on the Smart State's strong and stable foundations by supporting the leading edge research technologies.

This Regional Budget Statement outlines the Government's ongoing investment in Western Queensland's regional infrastructure and details important regional initiatives in 2005-06.

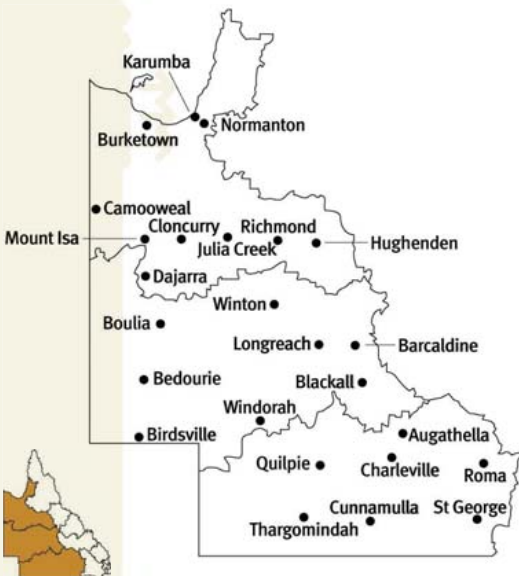
My Government is meeting the needs of the people in Western Queensland through infrastructure initiatives and services, especially in the areas of transport, training, education, health and housing.

In 2005-06, our infrastructure initiatives will enable the Western Queensland region to use the opportunities the region has to offer. This Statement demonstrates a significant commitment to the long-term viability of the region.

My Government will continue to work with the people of Western Queensland to create employment and lifestyle opportunities for all Queenslanders.

State Budget highlights for Western Queensland in 2005-06 include:

- \$12.3 million to overhaul and improve the Mica Creek Power Station by CS Energy
- \$9.26 million to upgrade Mount Isa water supply infrastructure including:
 - constructing the Terminal Reservoir pump station;
 - raising the embankment around Clear Water Lagoon;
 - duplicating three kilometres of the Lake Julius Pipeline; and
 - upgrading the water chlorination system.
- \$2.12 million to augment Glenore Weir and Normanton's water supply plants
- \$18.29 million to install concrete rail sleepers between Hughenden and Mount Isa
- \$5.63 million to upgrade the Warrego Highway including:
 - \$2 million to upgrade access to Roma and Mitchell for Type 2 road trains; and
 - \$560,000 to widen eight kilometres between Morven and Charleville.
- \$10.68 million to continue constructing a new 40 bed nursing home at the existing Roma Residential Aged Care Facility.



The Western Queensland region includes the city of Mount Isa and the shires of Aramac, Balonne, Barcaldine, Barcoo, Bendemere, Blackall, Booringa, Boulia, Bulloo, Bungil, Burke, Carpentaria, Cloncurry, Diamantina, Doomadgee, Flinders, Ilfracombe, Isisford, Longreach, McKinlay, Mornington, Murweh, Paroo, Quilpie, Richmond, Roma, Tambo, Warroo and Winton.



Queensland Government

Smart State

Peter Beattie MP
Premier and Minister for Trade

The Queensland Government's increased capital outlays in the 2005-06 Budget reflect our commitment to broadening our infrastructure base in order to better meet the social and economic needs of our growing population. Capital expenditure across the State in 2005-06 will be \$8 billion, an increase of 32% or \$1.9 billion, on estimated actual 2004-05 capital outlays. This allocation reflects the Government's ongoing commitment to regional and rural Queensland, with almost 60% of capital expenditure occurring outside the Brisbane Statistical Division.

Western Queensland

North Western - Carpentaria Minerals Province

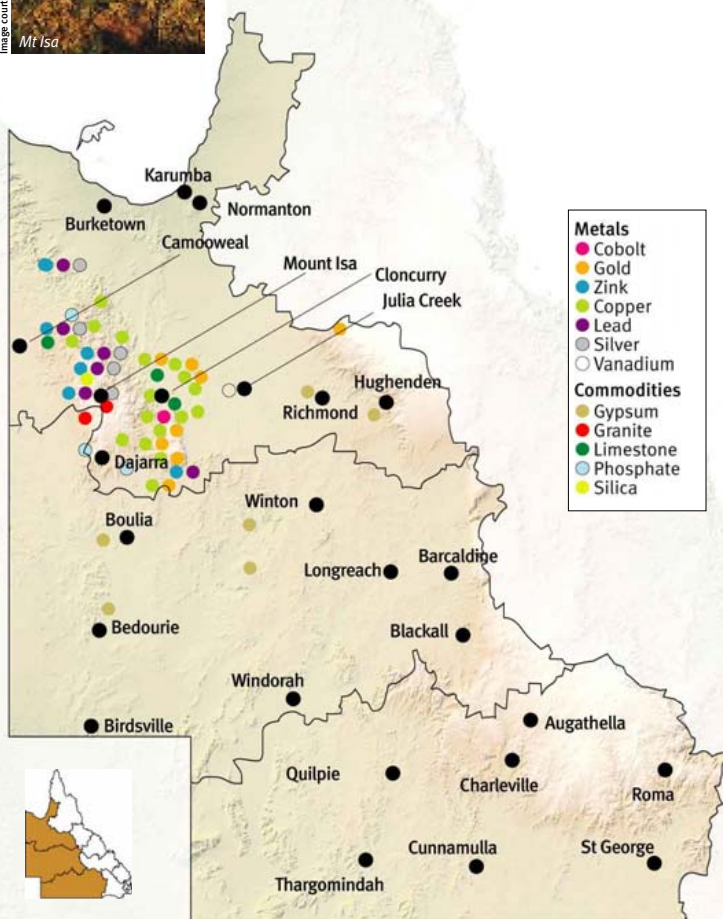
In 2005-06 the North Western Carpentaria Minerals Province will benefit from \$244.8 million for projects including:

- ➔ \$12.3 million for CS Energy to overhaul and improve the Mica Creek Power Station
- ➔ \$8.4 million for other electricity projects, including a new Ergon Power Station at Camooweal and improvements to the Doomadgee Power Station



➔ \$9.6 million to upgrade Mount Isa water supply infrastructure

➔ \$18.3 million to install concrete rail sleepers between Hughenden and Mount Isa



This Regional Budget Statement for Western Queensland highlights the Government's 2005-06 spending commitment to this region and its people. As a Government, we recognise the regions' valuable contributions to making Queensland the Smart State and providing services to over 3.9 million people. In this Budget we have allocated nearly 60% of capital expenditure outside the Brisbane Statistical Division.

The Western Queensland region covers almost 60% of the State. The region is home to 71,900 Queenslanders and 10.5% of the State's Indigenous population. The region's unemployment rate is 3.6%. This region is primarily agricultural, and it has the highest level of agricultural holdings in the State. Oil, gas and mining bring economic growth and strength to Western Queensland and there are several emerging industries adding diversity to the region's potential. The Carpentaria-Mount Isa Minerals Province has extensive mineral reserves, and gas from the region supplies key centres within Queensland and interstate.

Improving health care and strengthening services to the community

We are committed to providing better hospitals, services and health care for all Queenslanders. Within Western Queensland, this commitment includes spending on initiatives, such as:

- \$10.68 million to continue constructing a new 40 bed nursing home at the existing Roma Residential Aged Care Facility
- a total of \$1.87 million to buy medical equipment for the Mount Isa, Roma and Charleville Health Service Districts.

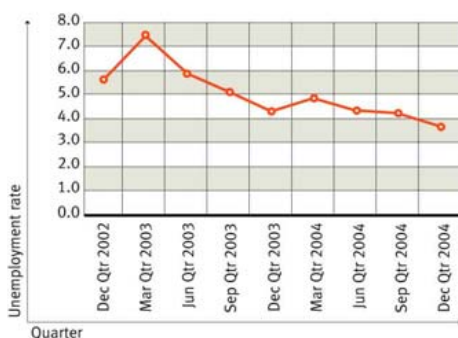
Expenditure on new and upgraded local emergency services facilities includes:

- \$800,000 for the Julia Creek Ambulance Station and rural fire facility
- \$152,000 for the Dirranbandi Ambulance Station
- \$150,000 for a joint emergency services facility at Doomadgee
- \$1.17 million for a joint facility for the ambulance and fire service in Roma.

We have committed \$1.7 million to support people with disabilities and their carers in the region, including \$155,000 for short term and limited respite care. Additional support of \$26,000 for community organisations will enable them to increase their capacity to support people with a disability and their families. Community groups will receive \$7.55 million to provide services in Western Queensland, including \$724,000 for child care, \$1.58 million for community support, \$914,000 for domestic violence prevention, \$1.09 million for prevention and early intervention services to support vulnerable children, young people and their families, \$2.05 million to support people at risk of homelessness and

Unemployment rate ^a

Quarterly



Source: DEWRSB - Small Area Labour Markets. (QRSIS database maintained by the Office of Economic and Statistical Research (OESR)).

(a) Data based on un-smoothed series.

\$1.19 million for youth development and justice.

We are working to support low-income families and individuals through housing and housing-related services. Spending in this region in 2005-06 includes:

- \$7.43 million to construct, purchase and upgrade dwellings, and purchase land for future construction of housing for Aboriginal and Torres Strait Islander people
- \$2.34 million for new and upgraded public housing
- \$2.09 million for community housing programs and services to address crisis, transitional and long-term housing needs
- \$750,000 to refurbish the Jimaylya Topsy Harry Centre for homelessness in Mount Isa.

In 2005-06 the Government has funded organisations across the State to build or upgrade sport and recreation facilities. \$4.01 million for projects in Western Queensland includes:

- \$1.5 million to the Longreach Shire Council to upgrade an existing swimming pool at Longreach to support swimming, water polo and aqua aerobics
- \$1.5 million to the Mount Isa City Council to construct a rodeo arena and camp drafting arena at Buchanan Park, Mount Isa.
- \$500,000 to the Aramac Shire Council to construct a wet deck swimming pool at Muttaborra in support of swimming and aqua aerobics.

Realising the Smart State through education, skills and innovation

The Premier launched the latest Smart State Strategy on 18 April 2005. *Smart Queensland: Smart State Strategy 2005-2015* establishes the strategic framework for using innovation and skills to drive economic growth to improve prosperity and quality of life for all Queenslanders.

In 2005-06, \$334,000 has been allocated to the BioBus, which will provide travelling biotechnology education and public

awareness exhibitions to rural and regional Queensland schools. An additional \$140,000 has also been allocated in capital expenditure for ongoing enhancements of the exhibition.

The Government will provide \$400,000 in 2005-06 to support research to assess prospects for the development of a cane toad specific toxin bait by the Australian Invasive Animal Cooperative Research Centre.

We are investing in school infrastructure across Western Queensland for the benefit of young people and their education. In 2005-06, funding we have allocated \$2.12 million, including \$169,000 for fit out, to upgrade education facilities at Spinifex State College and Sunset State School in Mount Isa, and Charleville State School.

Protecting our children and enhancing community safety

The Government is continuing to build a radically improved child protection system. A record \$394.8 million operating budget, up 45% since last year, will be spent this year to safeguard the welfare of Queensland's children. Western Queensland will benefit from the unprecedented increase of \$123 million for State-wide initiatives such as:

- \$28.8 million for additional permanent frontline and support staff
- \$19.6 million for extra alternative care places, extended family reunification services, foster care by non-government agencies and for sexual abuse counselling services
- \$13 million on foster care allowances and a further \$9 million for child related costs
- \$9.4 million for Aboriginal and Torres Strait Islander "recognised agencies"
- \$22.6 million for therapeutic services including, child psychology and speech pathology to children in care with complex needs.

Augmenting this is a capital program of \$58.8 million which includes:

- \$25 million in additional funding over two years (\$19.2 million in 2005-06) to expand the number of Child Safety offices across the State
- \$25.3 million for the roll-out of a new IT system to better manage client files and departmental business

Investment to enhance community safety within Western Queensland includes \$200,000 to plan for a replacement police station in Cloncurry.

Value of mineral production

(\$ million), 1990-91 to 2003-04



Source: Department of Natural Resources and Mines (unpublished data)

Building Queensland's regions

Efficient and integrated transport networks are important for the ongoing development of regional Queensland. In Western Queensland, major transport infrastructure initiatives include:

- \$25.44 million for various rail network acquisition and construction projects
- \$18.29 million to install concrete rail sleepers between Hughenden and Mount Isa
- \$9.2 million to upgrade the Burke Developmental Road including:
 - widening and shoulder sealing sections between Cloncurry and Normanton;
 - upgrading the floodway at Deadman's Gully between Normanton and Dimbulah; and
 - upgrading the Corduroy Creek floodway between Normanton and Dimbulah.
- upgrading the Flinders Highway including:
 - \$900,000 for between Charters Towers and Hughenden; and
 - \$3.43 million for between Julia Creek and Cloncurry.
- upgrading the Kennedy Developmental Road including:
 - \$941,000 to complete the repair and widening near Paddy Creek between Winton and Boulia;
 - \$1.8 million to improve almost 10 kilometres of pavement between Winton and Boulia; and

Polo match at Quilpie



Image courtesy Queensland Tourism

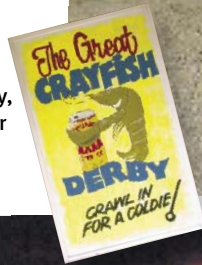
The Outback Festival, Winton



At Images courtesy Tourism Queensland



Since 1973, Winton has been showcasing the Outback way of life in a biennial, true blue festival. The Outback Festival includes events such as the Australian Dunny Derby, Bush Poets, Teddy Bear Picnic and much more.



- \$2.1 million to widen six kilometres of road between Hughenden and Winton.

Investment in the electricity system in 2005-06 includes:

- \$12.3 million to overhaul and improve the Mica Creek Power Station by CS Energy
- \$16 million on power stations, substations and transmission related works by Ergon Energy and additional regional expenditure throughout Western Queensland
- Powerlink's refurbishment of the substations that supply the electrified rail network in the Bowen Basin.

The region's long term viability is being enhanced by projects including:

- \$2.58 million which will be provided to local governments in the region for road and drainage works
- additional funding to local governments in the Boulia, Carpentaria, Diamantina, McKinlay, Quipile and Winton Shires to restore assets damaged by natural disasters
- \$2.12 million to augment Glenore Weir and Normanton's water plants
- \$350,000 to purchase land at Mica Creek for future industrial development in Mount Isa

- \$9.26 million to upgrade Mount Isa's water supply infrastructure including:
 - constructing the Terminal Reservoir pump station;
 - raising the embankment around Clear Water Lagoon;
 - duplicating a three kilometre section of the Lake Julius Pipeline; and
 - upgrading the water chlorination system.

Natural gas production

(Kilolitres million), 1990-91 to 2001-02



Source: Department of Natural Resources, Mines and Energy (unpublished data)

- \$250,000 per year over three years to stimulate growth in demand, length of stay and visitor expenditure for the Outback through marketing and product development together with industry.

The Government, in partnership with AgForce and rural Queenslanders, is also developing a Blueprint for the Bush. The Blueprint will be a long term plan which will include practical strategies to support sustainable rural communities.

Protecting the environment for a sustainable future

The natural and cultural heritage of Western Queensland is valued by all Queenslanders. This is reflected in our commitment of \$434,000 for capital works including:

- an upgrade of the old store building and interpretive centre in Diamantina National Park
- regulatory and boundary signage at Riversleigh, Lawn Hill and Boodjamulla in Lawn Hill National Park
- access, power and water supply services for the new Riversleigh rangers' accommodation units at Boodjamulla in Lawn Hill National Park
- upgrading the Mount Maria boundary fence in Chesterton Range National Park.

Growing a diverse economy and creating jobs

The unemployment rate in Western Queensland was 3.6% during the December quarter 2004, and has fallen by 2.5 percentage points since the December quarter 1996. The Government continues to work in partnership with the people of Western Queensland to build on the region's economic potential.

The Government's Breaking the Unemployment Cycle initiative provides training and job opportunities to Queenslanders. Western Queensland will receive around \$4.3 million to create an estimated 520 jobs through the initiative during 2005-06. \$775,000 is allocated in 2005-06 to community employment programs and \$3.52 million for apprenticeship and trainee incentives to provide jobs in crucial, skills-shortage industries and the public sector.

Delivering responsive government

The Queensland Government continues to engage with local communities, businesses and other government agencies to better coordinate services and identify strategies to meet local needs, including through regular Ministerial Regional Community Forums and Community Cabinets.

\$44.56 million will be spent State-wide in 2005-06 (\$125.5 million over the project life) to provide technology to improve business processes across government agencies. This project will generate long term savings and improve service delivery throughout the State.

Budget summary

Achieving strong economic growth and historic low unemployment rates

- Queensland's year-average unemployment rate is expected to fall to a 30-year low of 5% in 2004-05 and to remain at this historically low level in 2005-06.
- Queensland's employment continues to grow and, at 5¾% and 2½%, is expected to exceed the rest of Australia in 2004-05 and 2005-06, respectively.
- The State is expected to continue to grow more rapidly than the rest of Australia in 2005-06, representing the 10th consecutive year of performance above that of the other states.

Strong finances

- A General Government net operating surplus of \$934 million is forecast in 2005-06.
- The expected 2004-05 operating result of \$2.725 billion reflects the strength of the economy and investment markets.
- Beyond 2005-06, smaller operating and cash surpluses are forecast, primarily reflecting costs associated with significant investment in new infrastructure, the abolition of a number of State taxes, and the assumption of investment returns in line with long run averages.
- The State's net worth is budgeted to grow from \$85 billion at 30 June 2005 to in excess of \$93 billion by 30 June 2009.

Competitive taxes

- Queensland's competitive tax status has been maintained, with taxpayers in other states and territories paying on average 25% more state tax than Queenslanders in 2005-06.
- A land tax relief package will significantly reduce the number of Queenslanders paying land tax and provide rate reductions for all land tax payers, at a cost of \$847 million over four years.
- Debits tax and six stamp duties will be progressively abolished, beginning 1 July 2005. Queenslanders will save \$3.5 billion over seven years from the abolition of these State taxes.

Delivering on our priorities

Improving health care and strengthening services to the community

- The health budget increases by \$413 million or 8.4%, including service enhancements across the State.
- \$115.1 million in capital funding and \$120.4 million in recurrent funding has been allocated over four years to further develop responses to homelessness.
- An additional \$180 million over four years is provided to enhance disability services, including respite, emergency and crisis care.

Realising the Smart State through education, skills and innovation

- \$80.1 million will improve the Information and Communication Technologies (ICT) environment in schools and improve ICT access and the skills of students and teachers.
- \$291.9 million in recurrent and \$62.7 million in capital funding in 2005-06 will support training initiatives under the \$1 billion SmartVET strategy, including additional traineeship places in new and emerging industries, and further funding for the Mining Centre of Excellence to reduce skills shortages affecting the Queensland mining industry.

Protecting our children and enhancing community safety

- An overall funding increase of \$123.1 million will enhance child protection services.
- Police staffing and resources will be enhanced and \$231 million is allocated over three years to upgrade and extend various correctional facilities.

Managing urban growth and building Queensland's regions

- Capital spending will be boosted to \$8 billion, \$1.9 billion more than last year's record program.
- The South East Queensland Infrastructure Plan and Program identifies capital projects amounting to around \$55 billion. Over the next four years, approximately \$2 billion is allocated over current Budget commitments.

Protecting the environment for a sustainable future

- \$58 million in recurrent funding and \$25 million in capital funding has been allocated over four years to manage an estimated additional 3.46 million hectares of Queensland Parks and Wildlife Service estate.
- \$10 million over four years will support Queensland organisations to adopt resource efficient practices to improve the way they do business.

Growing a diverse economy and creating jobs

- More than \$470 million is provided over four years to support the Government's 10-year Smart State Strategy. This includes \$136 million in recurrent and \$64 million in capital funding over four years for three new Smart State grants programs to build research centres and support innovation in fields including health and medicine, agriculture and mining.
- The Breaking the Unemployment Cycle initiative will continue to provide employment programs for Queenslanders aimed at reducing skills shortages and improving the employability of job seekers.

Government services in your region

For information on government services and activities in Western Queensland, please contact the offices listed below. Additional contacts are available on the Government gateway at www.qld.gov.au or by ringing Smart Service Queensland on 13 13 04.

Aramac

QGAP Office

Gordon Street
Aramac QLD 4726
Telephone 4651 3014
Facsimile 4651 3323
Opening hours: Monday to
Friday - 9am to 1pm and 2pm to
4:45pm

Augathella

QGAP Office

Augathella Visitors Centre
98 Main Street
Augathella QLD 4477
Telephone 4654 5007
Facsimile 4654 5009
Opening hours: Monday to
Thursday - 9:30am to 3:30pm;
Friday - 9:30am to 4pm

Barcaldine

QGAP Office

Barcaldine Court House
Ash Street
Barcaldine QLD 4725
Telephone 4651 1191
Facsimile 4651 2021
Opening hours: Monday to
Friday - 9am to 4:30pm

Bedourie

QGAP Office

Bedourie Police Station
Merri Street
Bedourie QLD 4829
Telephone 4746 1128
Facsimile 4746 1266
Opening hours: Monday and
Friday - 8:30am to 12:30pm
and 1pm to 5pm

Birdsville

QGAP Office

Birdsville Police Station
McDonald Street
Birdsville QLD 4482
Telephone 4656 3310
Facsimile 4656 3312
Opening hours: Monday,
Wednesday, Thursday and
Friday - 9am to 1pm

Blackall

QGAP Office

Shamrock Street
Blackall QLD 4472
Telephone 4657 4233
Facsimile 4657 4908
Opening hours: Monday to
Friday - 9am to 4:30pm

Boulia

QGAP Office

Boulia Police Station
Herbert Street
Boulia QLD 4829
Telephone 4746 3043
Facsimile 4746 3338
Opening hours: Monday to
Thursday - 8:30am to 12:30pm

Camooweal

QGAP Office

Barkly Street
Camooweal QLD 4828
Telephone 4748 2025
Facsimile 4748 2026
Opening hours: Monday to
Friday - 9am to 5pm; Saturday
- 9am to 12pm

Cunnamulla

QGAP Office

5 Stockyard Street
Cunnamulla QLD 4490
Telephone 4655 1131
Facsimile 4655 1687
Opening hours: Monday to
Friday - 9am to 1pm and 2pm
to 5pm

Dirranbandi

QGAP Office

35-37 Railway Street
Dirranbandi QLD 4486
Telephone 4625 8411
Facsimile 4625 8433
Opening hours: Monday and
Friday - 9am to 12:30pm and
1:30pm to 4pm

Hughenden

QGAP Office

65 Brodie Street
Hughenden QLD 4821
Telephone 4741 1735
Facsimile 4741 1412
Opening hours: Monday to
Friday - 8am to 5pm

Injune

QGAP Office

c/- Injune Library Hutton Street
Injune QLD 4454
Telephone 4626 1546
Facsimile 4626 1099
Opening hours: Monday and
Tuesday - 1:30pm to 5pm;
Wednesday - 9am to 1pm;
Thursday - 11:30am to 5pm;
Friday - 11am to 5pm

Isisford

QGAP Office

Isisford Police Station
St Mary Street
Isisford QLD 4731
Telephone 4658 8153
Facsimile 4658 8183
Opening hours: Wednesday and
Friday - 9am to 5pm

Julia Creek

QGAP Office

Burke Street
Julia Creek QLD 4823
Telephone 4746 7162
Facsimile 4746 7338
Opening hours: Monday,
Tuesday and Friday - 9am
to 4:30pm; Wednesday and
Thursday - 9am to 12:30pm
and 1:30pm to 4:30pm

Jundah

QGAP Office

Jundah Police Station
Dickson Street
Jundah QLD 4736
Telephone 4658 6193
Facsimile 4658 6180
Opening hours: Monday and
Wednesday - 9am to 1:30pm;
Friday - 9am to 12:30pm and
1pm to 4:30pm

Mitchell

QGAP Office

Cnr Mary & Dublin Streets
Mitchell QLD 4465
Telephone 4623 1106
Facsimile 4623 1510
Opening hours: Monday to
Friday - 9am to 12:30pm and
1:30pm to 4:30pm

Normanton

QGAP Office

Haig Street
Normanton QLD 4890
Telephone 4745 1177
Facsimile 4745 1393
Opening hours: Monday to
Friday - 9am to 1pm and 2pm to
4:45pm

Richmond

QGAP Office

Goldring Street
Richmond QLD 4822
Telephone 4741 3227
Facsimile 4741 3721
Opening hours: Monday to
Friday - 9am to 12:30pm and
1:30pm to 4:30pm

St George

QGAP Office

The Terrace
St George QLD 4487
Telephone 4625 3266
Facsimile 4625 3180
Opening hours: Monday to
Friday - 9am to 4:30pm

Surat

QGAP Office

72 Burrows Street
Surat QLD 4417
Telephone 4626 5046
Facsimile 4626 5507
Opening hours: Monday to
Thursday - 1pm to 4:30pm;
Friday - 10:30pm to 12pm and
12:30pm to 5:30pm

Thargomindah

QGAP Office

Thargomindah Police Station
Dowling Street
Thargomindah QLD 4492
Telephone 4655 3291
Facsimile 4655 3224
Opening hours: Monday,
Wednesday and Friday - 10am
to 1pm; Thursday - 9am to 1pm

Windorah

QGAP Office

Windorah Police Station
Victoria Street
Windorah QLD 4481
Telephone 4656 3171
Facsimile 4656 3172
Opening hours: Monday and
Wednesday - 8am to 11am;
Tuesday and Thursday - 2pm to
5pm; Friday - 8am to 12pm

Winton

QGAP Office

Winton Courthouse
59 Vindex Street
Winton QLD 4735
Telephone 4657 1536
Facsimile 4657 1583
Opening hours: Monday,
Tuesday, Thursday and Friday -
8:30am to 4:30pm; Wednesday
- 9:30 am to 4:30pm

Mount Isa

Department of State Development and Innovation

75 Camooweal Street
Mount Isa QLD 4825
Telephone 4747 2144
Facsimile 4747 2166
Opening hours: Monday to
Friday - 9am to 5pm

