

Wide Bay - Burnett

State Budget

05-06



Premier's Message

My Government is continuing our investment in public infrastructure and services to meet the current and future needs of all Queenslanders.

We are also committed to working to ensure we create opportunities for Queensland's future prosperity and to continue building on the Smart State's strong and stable foundations by supporting the leading edge research technologies.

This Regional Budget Statement outlines the Government's ongoing investment in the Wide Bay-Burnett's regional infrastructure and details important regional initiatives in 2005-06.

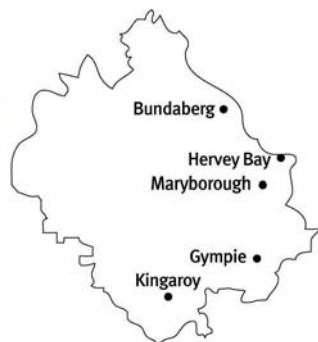
My Government is meeting the needs of the people in Wide Bay-Burnett through infrastructure initiatives and services, especially in the areas of transport, training, education, health and housing.

In 2005-06, our infrastructure initiatives will enable the Wide Bay-Burnett region to use the opportunities the region has to offer. This Statement demonstrates a significant commitment to the long-term viability of the region.

My Government will continue to work with the people of Wide Bay-Burnett to create employment and lifestyle opportunities for all Queenslanders.

State Budget highlights for the Wide Bay-Burnett region in 2005-06 include:

- \$20.32 million to complete the design and construction of a major dam and several weirs in the Burnett River catchment, with a total project cost of \$281 million
- \$32.41 million towards the construction of 24 new passenger carriages for Queensland Rail Citytrain services
- Upgrading the D'Aguilar Highway including:
 - \$360,000 for six kilometres of new road pavement between Kilcoy and Yarraman; and
 - \$1.67 million to replace the Sandy Creek Bridge between Yarraman and Kingaroy
- \$12.21 million to continue redeveloping and extending the Wondai Hospital to create a new 46 bed nursing home and five acute hospital beds
- \$8.3 million to continue the construction of a 96 bed residential aged care facility on the grounds of the Maryborough Hospital
- \$5.3 million to continue refurbishing the emergency department at the Gympie Hospital.



→ The Wide Bay-Burnett region consists of the cities of Bundaberg, Maryborough and Hervey Bay and the shires of Biggenden, Burnett, Cherbourg, Cooloola (including the regional centre of Gympie), Eidsvold, Gayndah, Isis, Kilkivan, Kingaroy, Kolan, Miriam Vale, Monto, Mundubbera, Murgon, Nanango, Perry, Tiara, Wondai and Woocoo.



Queensland Government

Smart State

Peter Beattie MP
Premier and Minister for Trade

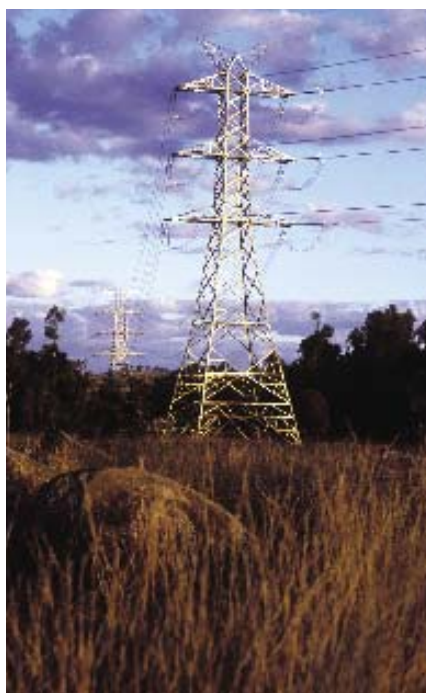
The Queensland Government's increased capital outlays in the 2005-06 Budget reflect our commitment to broadening our infrastructure base in order to better meet the social and economic needs of our growing population. Capital expenditure across the State in 2005-06 will be \$8 billion, an increase of 32% or \$1.9 billion, on estimated actual 2004-05 capital outlays. This allocation reflects the Government's ongoing commitment to regional and rural Queensland, with almost 60% of capital expenditure occurring outside the Brisbane Statistical Division.

Wide Bay-Burnett

➔ \$20.32 million to complete design and construction of a major dam and several weirs in the Burnett River catchment, with a total project cost of \$281 million



➔ \$131.1 million investment in the energy supply system in the region, including \$54.1 million on improvements to the Tarong Power Station and development of the Glen Wilga coal mine and rail corridor by Tarong Energy, \$74 million in network improvements by Ergon Energy and \$3 million on the distribution network in the Wide Bay-Burnett region to increase network capacity and improve reliability in Gympie and Imbil by ENERGEX.



This Regional Budget Statement for the Wide Bay-Burnett region highlights the Government's 2005-06 spending commitment to this region and its people. As a Government, we recognise the regions' valuable contributions to making Queensland the Smart State and providing services to over 3.9 million people. In this Budget we have allocated nearly 60% of capital expenditure outside the Brisbane Statistical Division.

The Wide Bay-Burnett region covers 3% of the State. The region is home to 257,200 Queenslanders and 6.3% of the State's Indigenous population. The region's unemployment rate is 6%. This region has a large diversity of industries and it is Queensland's largest producer of vegetables and citrus. Nearly 74% of the region is occupied by agricultural establishments. These are concentrated in the inland areas of the region. The coastal areas are favoured by a significant retired population. Tourism also plays a significant part, particularly in the coastal areas, and has become a profitable industry for Wide Bay-Burnett, led by growth in ecotourism activities.

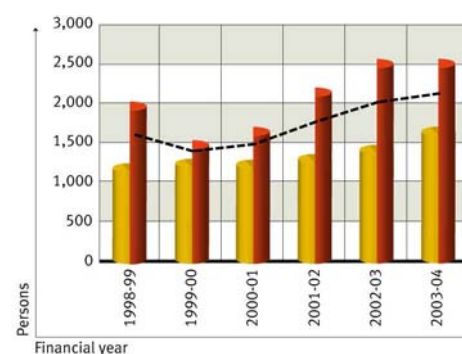
Improving health care and strengthening services to the community

We are committed to providing better hospitals, services and health care for all Queenslanders. This commitment includes local initiatives such as:

- \$12.21 million in 2005-06 to continue redeveloping and extending the Wondai Hospital to create a new 46 bed nursing home and five acute hospital beds
- \$8.3 million to continue the construction of a 96 bed residential aged care facility on the grounds of the Maryborough Hospital
- \$5.3 million to continue refurbishing the emergency department at the Gympie Hospital
- \$5.13 million to continue the construction of a replacement facility on the Gin Gin Hospital campus to integrate with a privately operated aged care facility

Participation in post secondary education, apprenticeships and traineeships

Brisbane, Queensland, 1994 to 2003



Source: DET, Apprenticeships and traineeships, (unpublished data)

- \$4.12 million towards the construction of a stand-alone building providing accommodation for specialist consultation rooms, a public health unit, breastscan services and rehabilitation staff offices at the Hervey Bay Hospital.

Expenditure on additional staff and new and upgraded emergency services facilities includes:

- \$1.7 million to replace the Gympie Ambulance Station
- \$450,000 to replace the Cherbourg Fire Station.

We have committed \$20.78 million to support people with disabilities and their carers in the region including:

- \$938,000 for short term and limited respite care
- \$340,000 to assist young adults with a disability who are leaving the State's care to maintain their choice of living arrangements and to participate in their community.

Additional support of \$53,000 for community organisations will enable them to increase their capacity to continue to support people with a disability and their families.

Community groups will receive \$7.49 million to provide services in the region, including \$580,000 for child care, \$1.58 million for community support, \$321,000 for domestic violence prevention, \$241,000 for prevention and early intervention services to support vulnerable children, young people and their families, \$3.19 million to support people at risk of homelessness, \$113,000 to link older people with their community, and \$1.46 million for youth development and justice.

We are working to support low-income families and individuals by providing improved housing and housing related services. Spending in this region in 2005-06 includes:

- \$10.36 million for community housing programs and services to address crisis, transitional and long-term housing needs, which includes \$7.9 million for boarding house accommodation in the Cooloola and Hervey Bay areas
- \$4.61 million to construct and upgrade public housing
- \$4.53 million to build, purchase and upgrade housing for Aboriginal and Torres Strait Islander people.

In 2005-06 the Government has funded organisations across the State to build or upgrade sport and recreation facilities. \$1.89 million for projects in the Wide Bay-Burnett Region includes:

- \$680,000 to the Hervey Bay City Council to construct a heated swimming pool at Torquay
- \$359,840 to the Maryborough City Council to build a multi-purpose facility at Maryborough.

Realising the Smart State through education, skills and innovation

The Premier launched the latest Smart State Strategy on 18 April 2005. *Smart Queensland: Smart State Strategy 2005-2015* establishes the strategic framework for using innovation and skills to drive economic growth to improve prosperity and quality of life for all Queenslanders.

In 2005-06, \$334,000 has been allocated to the BioBus, which will provide travelling biotechnology education and public awareness exhibitions to rural and regional Queensland schools. An additional \$140,000 has also been allocated in capital expenditure for ongoing improvements of the exhibition.

The Government will provide \$400,000 in 2005-06 to support research to assess prospects for the development of a cane toad specific toxin bait by the Australian Invasive Animal Cooperative Research Centre to limit the spread of cane toads.

We are investing in education and training infrastructure across the Wide Bay-Burnett region for the benefit of young people and their education. In 2005-06, funding includes:

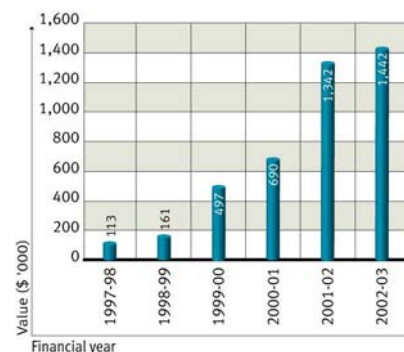
- \$1.35 million to consolidate the Wide Bay Institute of TAFE's Hervey Bay campus at the Urraween Road main campus
- \$1.25 million to redevelop the Bundaberg campus of the Wide Bay Institute of TAFE
- \$1.5 million, including \$120,000 for fit out, to upgrade a classroom to enhance senior pathways at the Kepnock State High School
- \$1.05 million, including \$84,000 for fit out, to upgrade a resource centre at Gympie State High School
- \$913,000, including \$73,000 for fit out, to upgrade a classroom at James Nash State High School.



Image courtesy Queensland Tourism

Wine grape production

value (\$ '000), 1997-98 to 2002-03



Source: ABS, Agriculture, Queensland (unpublished data)

Protecting our children and enhancing community safety

The Government is continuing to build a radically improved child protection system. A record \$394.8 million operating budget, up 45% since last year, will be spent this year to safeguard the welfare of Queensland's children. The Wide Bay-Burnett region will benefit from the unprecedented increase of \$123 million for State-wide initiatives such as:

- \$28.8 million for additional permanent frontline and support staff
- \$19.6 million for extra alternative care places, extended family reunification services, foster care by non-government agencies and for sexual abuse counselling services
- \$13 million on foster care allowances and a further \$9 million for child related costs.

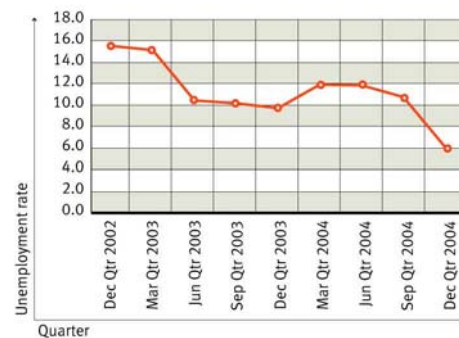
Augmenting this is a capital program of \$58.8 million which includes:

- \$25 million in additional funding over two years (\$19.2 million in 2005-06) to expand the number of Child Safety offices across the State
- \$25.3 million for the roll-out of a new IT system to better manage client files and departmental business.

Investment to enhance community safety within the Wide Bay-Burnett region includes \$7.8 million for the police station and watchhouse in Gympie.

Unemployment rate ^a

Quarterly



Source: DEWRBS - Small Area Labour Markets. (QRSIS database maintained by the Office of Economic and Statistical Research (OESR)).

(a) Data based on un-smoothed series.

Building Queensland's regions

Efficient and integrated transport networks are important for the ongoing development of regional Queensland. In the Wide Bay-Burnett region, major transport infrastructure initiatives include:

- \$32.41 million towards the construction of 24 new passenger carriages for Queensland Rail Citytrain services
- \$776,000 for a conveyor system, sand washing plant and other capital works at the Bundaberg Port Authority
- \$1.13 million in total for various upgrading projects on the Isis Highway
- \$8.2 million to upgrade the Maryborough to Hervey Bay Road including:
 - widening the Lamington Bridge in Maryborough;
 - pavement widening over a 20 kilometre section;
 - duplicating four lanes between Hunter Street and Taylor Street, and between Bideford Street and Elizabeth Street and starting major duplication works on other sections;
 - intersections at Urraween Road and Ferry and Alice Streets; and

- upgrading between Ferry Street and Woodstock Street.
- Upgrading the D'Aguiar Highway including:
 - \$360,000 for six kilometres of new road pavement between Kilcoy and Yarraman; and
 - \$1.67 million to replace the Sandy Creek Bridge between Yarraman and Kingaroy.

Investment in the electricity supply system in 2005-06 includes:

- \$54.1 million to improve the Tarong Power Station and develop the Glen Wilga coal mine and rail corridor by Tarong Energy
- \$74 million in network improvements by Ergon Energy
- \$3 million on the distribution network in the Wide Bay-Burnett region to increase network capacity and improve reliability in Gympie and Imbil by ENERGEX.

The region's long term viability is being enhanced by infrastructure projects including:

- \$2.36 million which will be provided to local governments in the region for road and drainage works
- \$1.3 million for the Pulgul Creek Effluent Recycling Strategy and the Pulgul Waste Water Treatment Plant

- \$20.32 million to complete the design and construction of a major dam and several weirs in the Burnett River catchment, with a total project cost of \$281 million
- \$4.08 million for Burnett Hydro power generation works.

The Government, in partnership with AgForce and rural Queenslanders, is also developing a Blueprint for the Bush. The Blueprint will be a long term plan which will include practical strategies to support sustainable rural communities.

Protecting the environment for a sustainable future

The natural and cultural heritage of the Wide Bay-Burnett region is valued by all Queenslanders. This is reflected in our commitment of \$1.06 million for enhancing National and Conservation Parks including:

- Big Woody Island historic sites, a new toilet block at Double Island Point, Rainbow Beach and an office and first aid room at Dundubara Base in the Great Sandy National Park
- a radio repeater at Eurimbula in Eurimbula Resources Reserve
- installing a renewable energy power supply at Waddy Point Ranger Base in the Great Sandy National Park.

Growing a diverse economy and creating jobs

The unemployment rate in the Wide Bay-Burnett region was 6.0% during the December quarter 2004, and has fallen by 8.7 percentage points since the December quarter 1996.

The Government continues to work in partnership with the people of Wide Bay-Burnett to build on the region's economic potential.

The Government's Breaking the Unemployment Cycle initiative provides training and job opportunities to Queenslanders. The Wide Bay-Burnett region will receive around \$8.07 million to create an estimated 884 jobs through the initiative during 2005-06. \$3.75 million is allocated in 2005-06 to community employment programs and \$4.32 million for apprenticeship and trainee incentives to provide jobs in crucial, skills-shortage industries and the public sector.

Delivering responsive government

The Queensland Government continues to engage with local communities, businesses and other government agencies to better coordinate services and identify strategies to meet local needs, including through regular Ministerial Regional Community Forums and Community Cabinets.

\$44.56 million will be spent State-wide in 2005-06 (\$125.5 million over the project life) to provide technology to improve business processes across government agencies. This project will generate long term savings and improve service delivery throughout the State.

Maryborough Heritage Markets



Budget summary

Achieving strong economic growth and historic low unemployment rates

- Queensland's year-average unemployment rate is expected to fall to a 30-year low of 5% in 2004-05 and to remain at this historically low level in 2005-06.
- Queensland's employment continues to grow and, at 5¾% and 2½%, is expected to exceed the rest of Australia in 2004-05 and 2005-06, respectively.
- The State is expected to continue to grow more rapidly than the rest of Australia in 2005-06, representing the 10th consecutive year of performance above that of the other states.

Strong finances

- A General Government net operating surplus of \$934 million is forecast in 2005-06.
- The expected 2004-05 operating result of \$2.725 billion reflects the strength of the economy and investment markets.
- Beyond 2005-06, smaller operating and cash surpluses are forecast, primarily reflecting costs associated with significant investment in new infrastructure, the abolition of a number of State taxes, and the assumption of investment returns in line with long run averages.
- The State's net worth is budgeted to grow from \$85 billion at 30 June 2005 to in excess of \$93 billion by 30 June 2009.

Competitive taxes

- Queensland's competitive tax status has been maintained, with taxpayers in other states and territories paying on average 25% more state tax than Queenslanders in 2005-06.
- A land tax relief package will significantly reduce the number of Queenslanders paying land tax and provide rate reductions for all land tax payers, at a cost of \$847 million over four years.
- Debits tax and six stamp duties will be progressively abolished, beginning 1 July 2005. Queenslanders will save \$3.5 billion over seven years from the abolition of these State taxes.

Delivering on our priorities

Improving health care and strengthening services to the community

- The health budget increases by \$413 million or 8.4%, including service enhancements across the State.
- \$115.1 million in capital funding and \$120.4 million in recurrent funding has been allocated over four years to further develop responses to homelessness.
- An additional \$180 million over four years is provided to enhance disability services, including respite, emergency and crisis care.

Realising the Smart State through education, skills and innovation

- \$80.1 million will improve the Information and Communication Technologies (ICT) environment in schools and improve ICT access and the skills of students and teachers.
- \$291.9 million in recurrent and \$62.7 million in capital funding in 2005-06 will support training initiatives under the \$1 billion SmartVET strategy, including additional traineeship places in new and emerging industries, and further funding for the Mining Centre of Excellence to reduce skills shortages affecting the Queensland mining industry.

Protecting our children and enhancing community safety

- An overall funding increase of \$123.1 million will enhance child protection services.
- Police staffing and resources will be enhanced and \$231 million is allocated over three years to upgrade and extend various correctional facilities.

Managing urban growth and building Queensland's regions

- Capital spending will be boosted to \$8 billion, \$1.9 billion more than last year's record program.
- The South East Queensland Infrastructure Plan and Program identifies capital projects amounting to around \$55 billion. Over the next four years, approximately \$2 billion is allocated over current Budget commitments.

Protecting the environment for a sustainable future

- \$58 million in recurrent funding and \$25 million in capital funding has been allocated over four years to manage an estimated additional 3.46 million hectares of Queensland Parks and Wildlife Service estate.
- \$10 million over four years will support Queensland organisations to adopt resource efficient practices to improve the way they do business.

Growing a diverse economy and creating jobs

- More than \$470 million is provided over four years to support the Government's 10-year Smart State Strategy. This includes \$136 million in recurrent and \$64 million in capital funding over four years for three new Smart State grants programs to build research centres and support innovation in fields including health and medicine, agriculture and mining.
- The Breaking the Unemployment Cycle initiative will continue to provide employment programs for Queenslanders aimed at reducing skills shortages and improving the employability of job seekers.

Government services in your region

For information on government services and activities in the Wide Bay-Burnett region, please contact the offices listed below. Additional contacts are available on the Government gateway at www.qld.gov.au or by ringing Smart Service Queensland on 13 13 04.

Agnes Waters

QGAP Office

3 Captain Cook Drive
Agnes Waters QLD 4677
Telephone 4902 1555
Facsimile 4902 1599
Opening hours:
Monday to Friday - 9am to 4:30pm

Blackbutt

QGAP Office

69 Hart Street
Blackbutt QLD 4306
Telephone 4163 0030
Facsimile 4163 0436
Opening hours:
Monday to Friday - 8am to 12pm
and 1pm to 4:30pm

Eidsvold

QGAP Office

32 Moreton Street
Eidsvold QLD 4627
Telephone 4165 1063
Facsimile 4165 7244
Opening hours:
Monday to Friday - 8:30am to 4:30pm

Kilkivan

QGAP Office

26 Bligh Street
Kilkivan QLD 4600
Telephone 5484 1068
Facsimile 5484 1390
Opening hours:
Monday to Friday - 8:30am to 4:30pm

Monto

QGAP Office

53 Newton Street
Monto QLD 4630
Telephone 4166 1350
Facsimile 4166 1047
Opening hours:
Monday to Friday - 9am to 4:30pm

Mundubbera

QGAP Office

51 Lyons Street
Mundubbera QLD 4626
Telephone 4165 4948
Facsimile 4165 4810
Opening hours:
Monday to Friday - 8:30am to 5pm

Murgon

QGAP Office

48 Stephens Street
West Murgon QLD 4605
Telephone 4168 1801
Facsimile 4168 1669
Opening hours:
Monday to Friday - 9am to 4:30pm

Hervey Bay

Department of Communities – Wide Bay- Burnett Regional Office

Level 1, Brenden Hansen Building
50-54 Main Street
Hervey Bay QLD 4655
Telephone 4197 7900
Facsimile 4124 1495
Opening hours:
Monday to Friday - 8:30am to 5pm

Gympie

Department of Natural Resources and Mines - Gympie Service Centre

Government Office Building
27 O'Connell Street
Gympie QLD 4570
Telephone 5480 6208
Facsimile 5482 9278
Opening hours:
Monday to Friday - 9am to 5pm

Bundaberg

State Development and Innovation Centre

205 Bourbong Street
Bundaberg QLD 4670
Telephone 4151 9700
Facsimile 4151 9711
Opening hours: Monday to Friday
- 8:30am to 5pm

Maryborough

State Development and Innovation Centre

Floor 2, Ergon Energy Building
97-99 Adelaide Street
Maryborough QLD 4650
Telephone 4121 1780
Facsimile 4123 1874
Opening hours:
Monday to Friday - 8:30am to 5pm

Pialba (Hervey Bay)

State Development and Innovation Centre

Brenden Hansen Building Main
Street
Pialba QLD 4655
Telephone 4125 9270
Facsimile 4125 9279
Opening hours:
Monday to Friday - 8:30am to 5pm

